



Mechanized Fire Line Construction

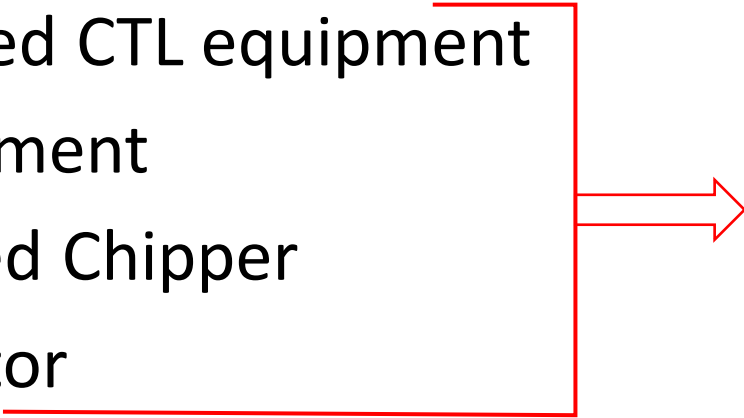
...getting down in the ashes!



Matthew Mattioda
Sr. Vice President, CTL Systems
Chief Forester
Miller Timber Services

Discussion Overview

- Your grandpa's mechanized fireline construction
- Tracked/rubber-tired CTL equipment
- Fire-Fighting Equipment
- Forwarder-Mounted Chipper
- Harvester-Masticator
- Conclusion



Plus, how these resources get ordered at the federal level.

Grandad's line construction



*...nothing wrong with these tools! Still need these
and they're not going anywhere.*

Tracked/rubber-tired CTL equipment

- ‘Traditional’ harvester & forwarder
- Designation in VIPR/how to order?



Tracked/rubber-tired CTL equipment

Designation in VIPR/how to order?

Harvester – Feller Buncher Type 1 (different capabilities than buncher!).

<https://www.youtube.com/watch?v=64PMuUvPC3c>

Forwarder – not listed in VIPR. Best bet is EERA – either through contacting MTS directly or through AIMS list (contact MTS directly).



= Two-machine team to cut, process, forward and load.



MILLER
TIMBER SERVICES

Fire-Fighting Equipment (FFE)

- Purpose-built 2,640 gal. water tank + cannon mounted on forwarder
- https://www.youtube.com/watch?v=K5J_zVIJxwU
- Designation in VIPR/how to order?



Photo courtesy of Ponsse North America.



Fire-Fighting Equipment (FFE)

Designation in VIPR/how to order?

Listed in VIPR as Skidgine Type 1 (but it goes above and beyond a traditional skidgine). Can also use EERA direct w/MTS.



Photo courtesy of Ponsse North America.

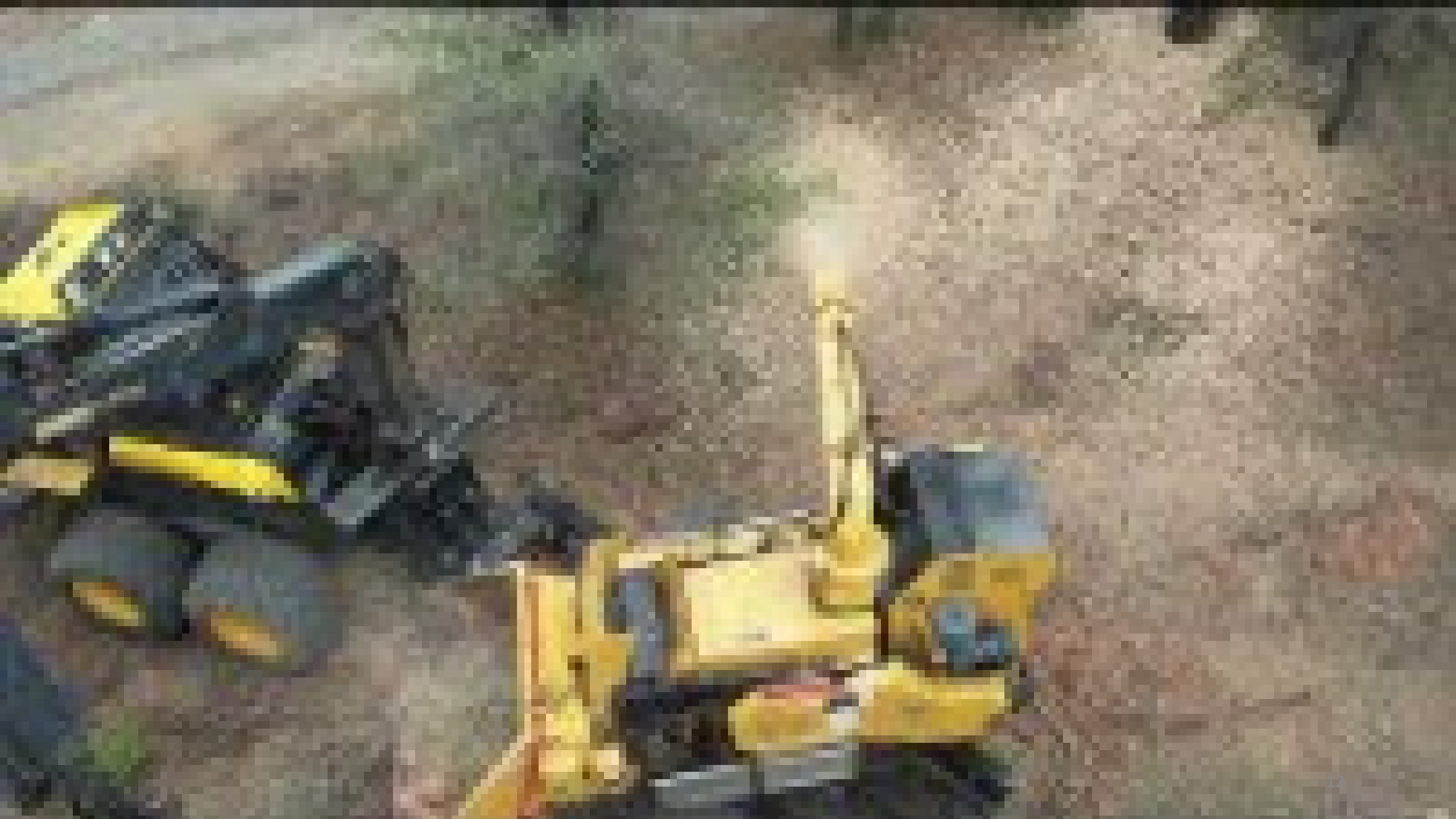
- *Uncover hot spots with grapples*
- *Direct attack*
- *Pre-wet & hold backburn*
- *Apply water up to 150'*
- *Can replace 20-person hand crew in some situations*
- *Refillable under its own power*
- *Quick & easy changeover from forwarder to FFE and back*
- *Night operations*

Forwarder-Mounted Chipper

Remember Fargo? Wood chippers are all the rage!



<https://www.youtube.com/watch?v=nzDOg1iEgno>



Forwarder-Mounted Chipper

Designation in VIPR/how to order?

Not currently available in VIPR. Must pursue EERA direct with Miller Timber.



- *Residual slash disposal*
- *Safe slash disposal (no human limbs in the chipper!)*
- *Don't need another machine to collect & transport slash to landings*
- *Access inaccessible areas*

Harvester-Masticator

Steep slope mastication

<https://www.youtube.com/watch?v=t8mPgrgRS8>





Harvester-Masticator

Designation in VIPR/how to order?

Can be correctly called a masticator in VIPR. Can also pursue EERA direct with Miller Timber.



- *Backburn preparation*
- *Residual resource protection*
- *Tracked & rubber-tired, quick changeover – roads!*
- *Steep slope*

Conclusion...

- Many tools for safe, efficient fire line construction.
- Mechanization is a great way forward.
- Like most things in life, different tools for different jobs...
- ...just need to know how/when/why to use the ones we have!

Thank you!



Matt Mattioda
Miller Timber Services
(541) 929-2840
www.millertimber.com

