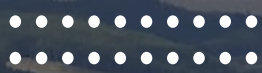


Cut to Length Versatility

Joe Schaefer

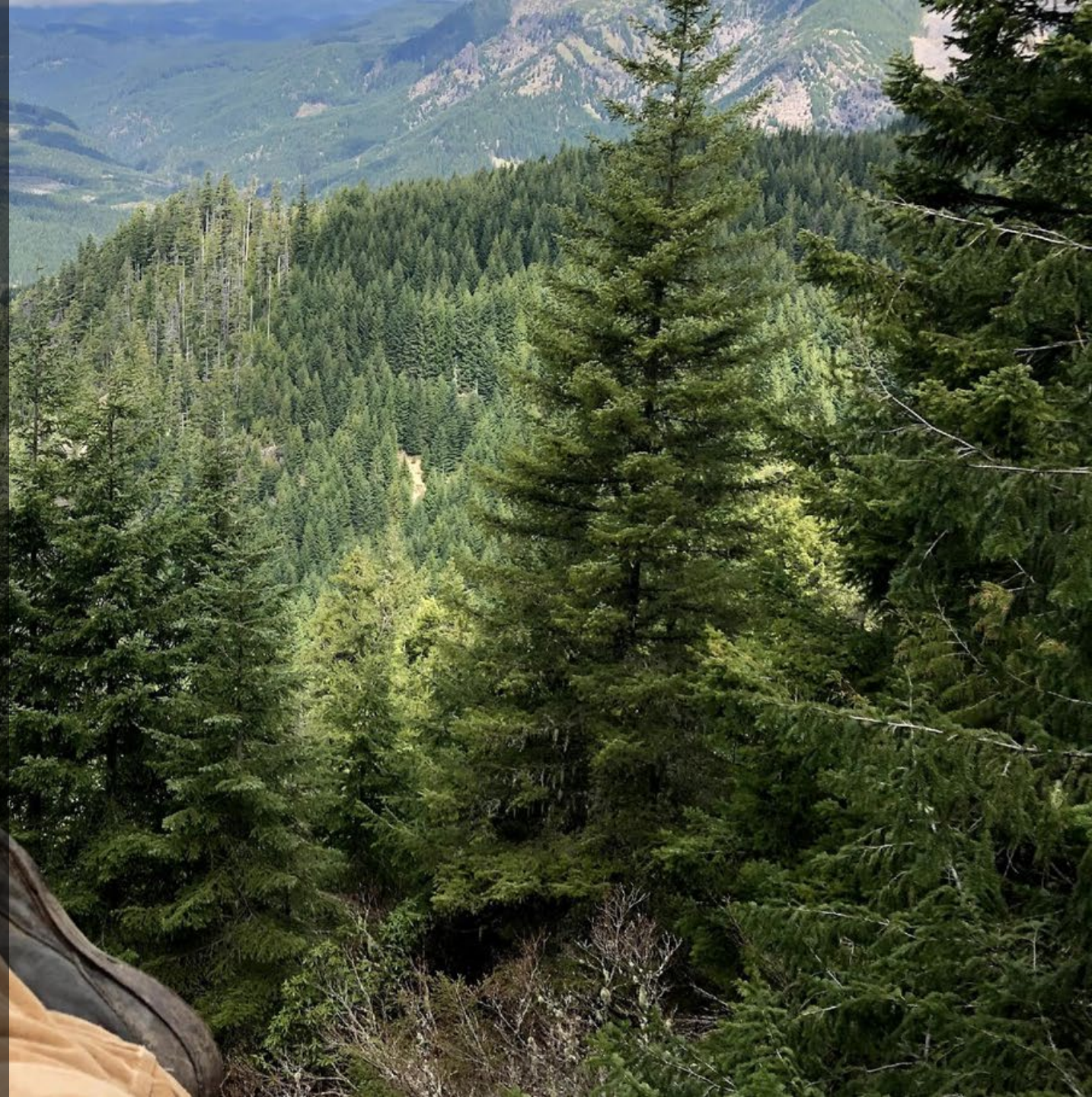
Cascade Timber Consulting
Inc.





Landowner Perspective:

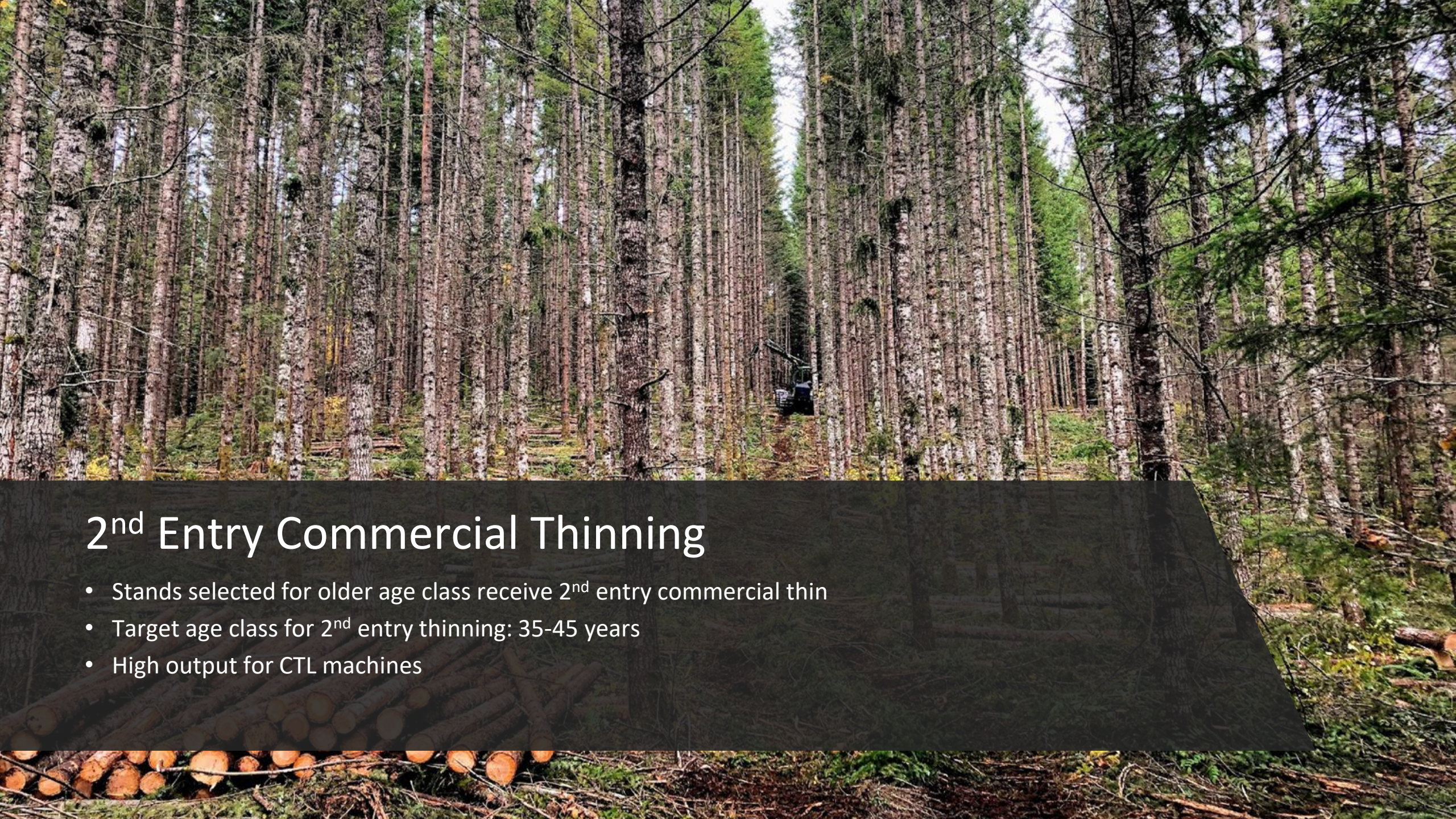
- Located in Sweet Home Oregon
- Manage 145,000 acres for HTLP
- Commercial thinning program ramped up in 2018





1st Entry Commercial Thinning

- Age class 19-30 years of age
- Thinning from below
- Main silvicultural treatment for CTL equipment on HTLP



2nd Entry Commercial Thinning

- Stands selected for older age class receive 2nd entry commercial thin
- Target age class for 2nd entry thinning: 35-45 years
- High output for CTL machines

Road Daylighting

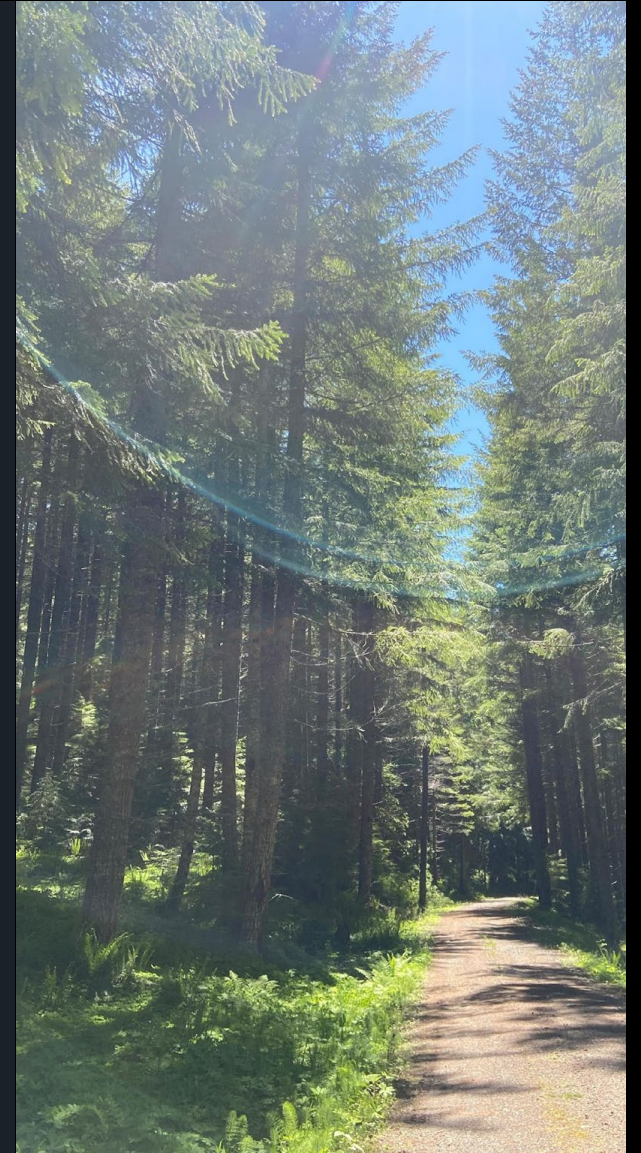
- Clear first row of trees from the roadsides to increase daylight to the road prism
- Focus on hardwood encroachment
- Reduces road maintenance costs and increases road life by reducing organic material on road surface
- Forwarder and harvester works well to cover lots of ground quickly and efficiently





Fuel Reduction Thinning

- Roadside clearcutting to create fire break
- Sanitation thinning within the unit
 - Focus on areas around USFS wilderness
- Working in cooperation with USFS and other private landowners
- Other fuel reduction tactics are reducing fuel loading on wildland urban interfaces



Stand Rehab:

- Stands that might need a reset from hardwood intrusion or poor site prep.
 - Thinning and clearcutting have been utilized with CTL equipment for stand rehab.
 - Blow down or severe edge damage clearcutting.
-





Sensitive Site Treatment

- Areas needing extra care
- Private Forest Accord RMA buffer treatments
- Using CTL machines to minimize disturbance

The background of the slide is a close-up, top-down view of several stacked logs. The logs are cut into circular cross-sections, showing the concentric growth rings of the wood. The colors range from light tan to dark brown, with some logs showing more pronounced ring patterns than others. The logs are piled together, creating a textured, layered appearance.

Island Clearcuts

- Areas with smaller acreage that need to be clearcut
- Associated leave tree area to commercial thinning unit that reached diameter requirement
- Limiting factors are tree size, unit size and terrain

Future

- Continuing silvicultural treatments of our stands
- Fuel reduction thins
- Rehab clearcuts
- Small island clearcuts
- Different applications?

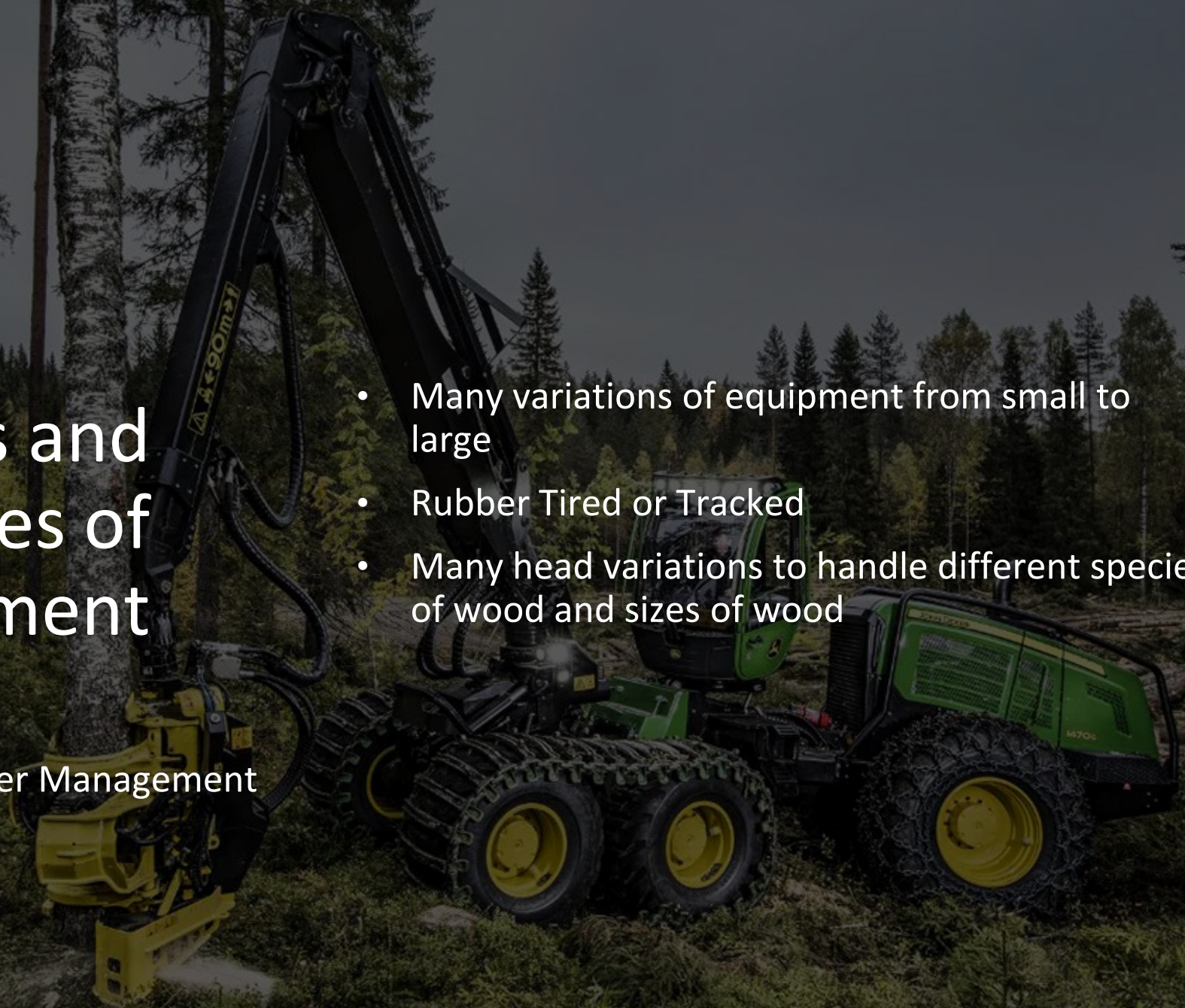


Limits and Capabilities of CTL Equipment

Chris Melcher

Sweet Home Timber Management

- Many variations of equipment from small to large
- Rubber Tired or Tracked
- Many head variations to handle different species of wood and sizes of wood



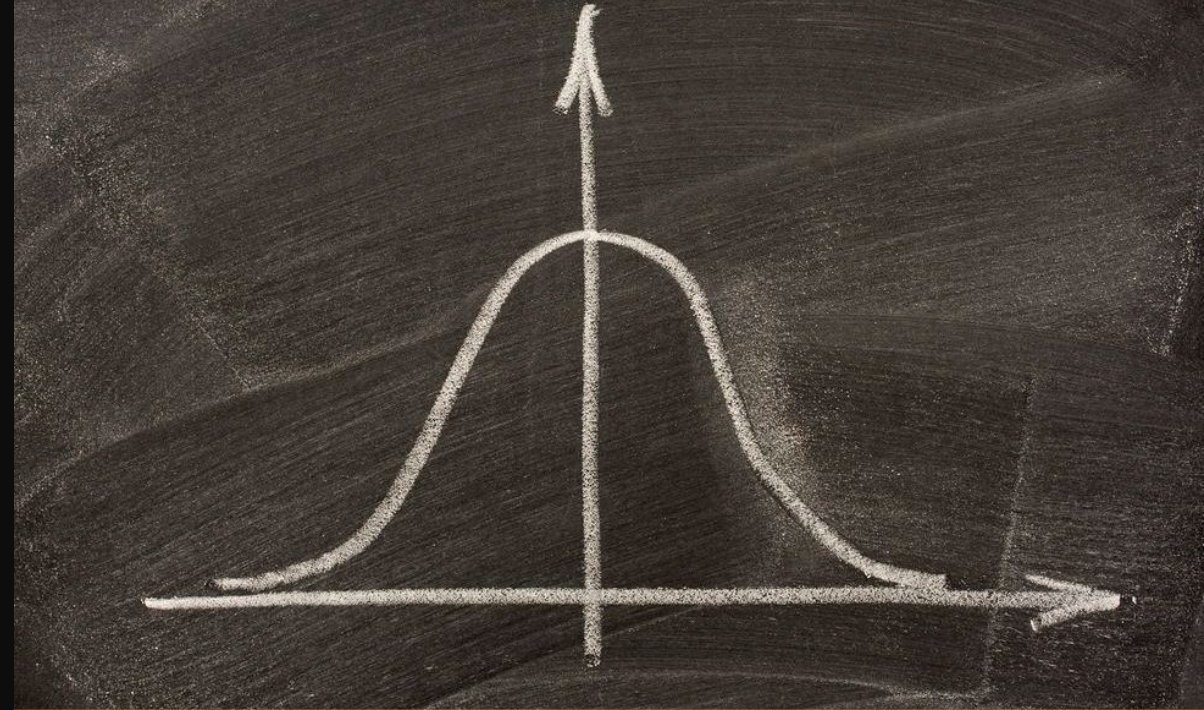
Matching The Machine to The Wood

- Big Machine = Big Wood
- Small Machine = Small Wood
- Big Machine can do Small Wood (*cost per unit harvested is high*)
- Small Machine can not do Big Wood



Productivity of Rubber Tired Machines

- Productivity is High when the wood is matched well with the size of the Machine and Capabilities of the Harvester Operator
 - Many manufacturers' heads can feed 16-21 feet/second
-





High Quality Logs

- Vast Assortments of Feed Rollers to protect from damage to processed wood
- Dialed processing pressures minimize feed roller indentations for high quality Peeler logs

Cut to Length Equipment on Steep Slopes

- We put our John Deere equipment on steep slopes everyday throughout the year, however summer time is best.
 - Slopes as steep as 30 degrees or about 60% without winch assist
 - Slopes that steep are typically accessed from the top and logged to the bottom*
 - The productivity of tracked based equipment on steep slopes will most likely always out compete a rubber tired CTL system
-





Questions?

