

Updates and Lessons Learned



Andrea Sonnen
Lead Pesticide
Investigator
Pesticides Program

Who Am I?

- Born and raised in Oregon
- Grew up in agriculture
- Went to OSU for agriculture
- Still in agriculture
- Enjoy time with my family and friends



**OREGON
DEPARTMENT OF
AGRICULTURE**

Hot Breaking News

- Shuffling and New Faces at ODA
- New email addresses: example Andrea.Sonnen@oda.oregon.gov
- IT'S RENEWAL SEASON!!!!!!!!!!!!



OREGON
DEPARTMENT OF
AGRICULTURE

EPA Early Mitigation Comment Period

- FIFRA Interim Ecological Mitigation measures to protect nontarget species
- Bulletins Live! Two
- Comment period open for 75 days (closes Jan 30, 2023)
- <https://www.epa.gov/pesticides/epa-advances-early-pesticides-protections-endangered-species-increases-regulatory>
- <https://www.regulations.gov/docket/EPA-HQ-OPP-2022-0908/document>



OREGON
DEPARTMENT OF
AGRICULTURE

FY 2022

July 1, 2021 – June 30, 2022

426 cases

51 Ag Use Follow up Investigations

86 Non Ag Use Follow up Investigations

71 Tracking Cases



OREGON
DEPARTMENT OF
AGRICULTURE



What do you see?

What would you
ask about?



**OREGON
DEPARTMENT OF
AGRICULTURE**

Personal Protective Equipment (PPE)

Applicators and other handlers must wear: long-sleeved shirt and long pants, shoes plus socks. Follow manufacturer's instructions for cleaning/maintaining Personal Protective Equipment. If there are no such instructions for washables, use detergent and hot water. Keep and wash PPE separately from other laundry.

Non-Agricultural Use Requirements

The requirements in this box apply to uses of this product that are NOT within the scope of the Worker Protection Standard (40 CFR Part 170) for agricultural pesticides. The WPS applies when this product is used to produce agricultural plants on farms, forests, nurseries or greenhouses.

Keep people and pets off treated areas until spray solution has dried.



OREGON
DEPARTMENT OF
AGRICULTURE

CATEGORIES OF LICENSES

Ornamental & Turf - Herbicide

Ornamental & Turf - Insecticide & Fungicide



**OREGON
DEPARTMENT OF
AGRICULTURE**

THE TAKE HOME

Be able to answer simple questions about what it is that you are doing if asked, or know who to send people with questions to. It can be as simple as, “You can call Carl at ...,” or even have a card that you can hand out with contact information.

Make sure you have the appropriate PPE on for the chemical you are applying.

And finally, make sure you are clear on what license category you need for the application you are making. ODA licensing is just a phone call away 😊



OREGON
DEPARTMENT OF
AGRICULTURE

What do you see?

What would you
ask about?



**OREGON
DEPARTMENT OF
AGRICULTURE**



05/18/2021 10:50



**OREGON
DEPARTMENT OF
AGRICULTURE**

Sample NUF210433-5: Ground vegetation collected 30 ft. from road

Lab. No.:	Test No.	Analysis Requested	Analytical Results	Analyst
	5330	Glyphosate	<0.016 ppm MRL=0.016 ppm	TBK
	5612	Aminocyclopyrachlor	<0.010 ppm MRL=0.010 ppm	SSP
	5987	Metsulfuron-methyl	<0.010 ppm MRL=0.010 ppm	TBK
	10502	Dicamba	<0.010 ppm MRL=0.010 ppm	JRW
	10506	2,4-D	0.052 ppm MRL=0.010 ppm	JRW
	10507	Triclopyr	0.012 ppm MRL=0.010 ppm	JRW

Sample NUF210433-6: Ground vegetation collected 15 ft. from road

Lab. No.:	Test No.	Analysis Requested	Analytical Results	Analyst
	5330	Glyphosate	<0.016 ppm MRL=0.016 ppm	TBK
	5612	Aminocyclopyrachlor	<0.010 ppm MRL=0.010 ppm	SSP
	5987	Metsulfuron-methyl	<0.010 ppm MRL=0.010 ppm	TBK
	10502	Dicamba	<0.010 ppm MRL=0.010 ppm	JRW
	10506	2,4-D	230 ppm MRL=0.010 ppm	JRW
	10507	Triclopyr	110 ppm MRL=0.010 ppm	JRW
	10511	Picloram	<0.020 ppm MRL=0.020 ppm	TBK

Ground vegetation collected between 5 and 8 ft. from road

Test No.	Analysis Requested	Analytical Results
5330	Glyphosate	<0.016 ppm MRL=0.016 ppm
5612	Aminocyclopyrachlor	<0.010 ppm MRL=0.010 ppm
5987	Metsulfuron-methyl	<0.010 ppm MRL=0.010 ppm
10502	Dicamba	<0.010 ppm MRL=0.010 ppm
10506	2,4-D	210 ppm MRL=0.010 ppm
10507	Triclopyr	94. ppm MRL=0.010 ppm
10511	Picloram	<0.040 ppm MRL=0.040 ppm



OREGON
DEPARTMENT OF
AGRICULTURE

THE TAKE HOME

Applications should only be made when you have the permission and proper licensing to do so.



**OREGON
DEPARTMENT OF
AGRICULTURE**



What do you see?

What would you
ask about?



**OREGON
DEPARTMENT OF
AGRICULTURE**



What do you see?

What would you ask about?



**OREGON
DEPARTMENT OF
AGRICULTURE**



What do you see?

What would you
ask about?



**OREGON
DEPARTMENT OF
AGRICULTURE**



What do you see?

What would you
ask about?



**OREGON
DEPARTMENT OF
AGRICULTURE**

om File Located at Top of Pit
Analysis Requested

Analytical Results

Chlorpyrifos	990 ppm	MRL=0.010	ppm
Bromacil	2.6 ppm*	MRL=0.020	ppm
Diuron	4.4 ppm	MRL=0.020	ppm
Chlorothalonil	0.24 ppm	MRL=0.020	ppm
Hexythiazox	750 ppm*	MRL=0.010	ppm
Pyraclostrobin	0.27 ppm	MRL=0.010	ppm
Pendimethalin	0.050 ppm	MRL=0.010	ppm
Spinosad	<0.010 ppm	MRL=0.010	ppm



OREGON
DEPARTMENT OF
AGRICULTURE



What do you see?

What would you ask about?



**OREGON
DEPARTMENT OF
AGRICULTURE**

The Take Home

Dispose of old, partial pesticides appropriately, in accordance with the law.



**OREGON
DEPARTMENT OF
AGRICULTURE**

What do you see?

What would you
ask about?



**OREGON
DEPARTMENT OF
AGRICULTURE**



What do you see?

What would you
ask about?



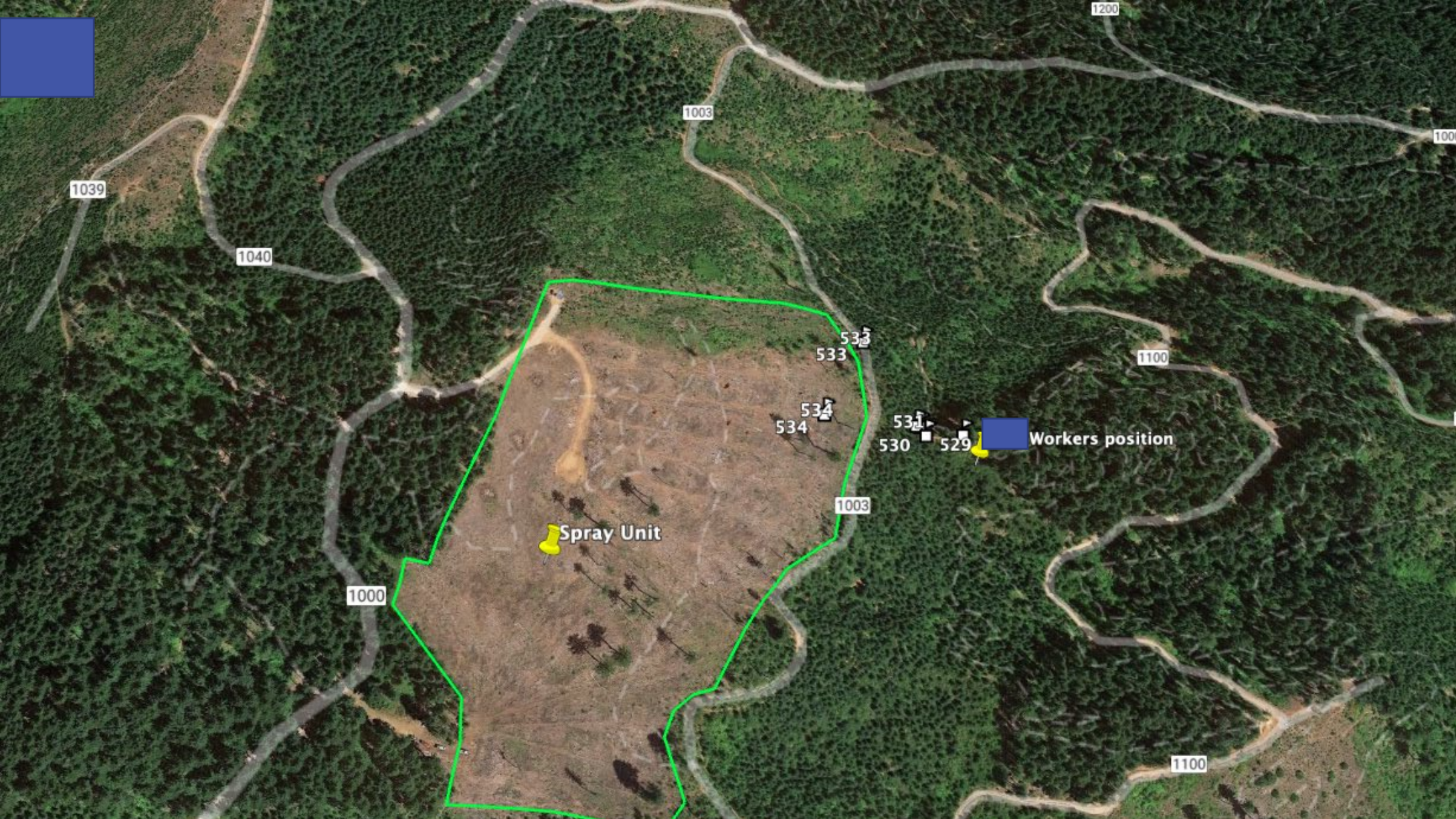
**OREGON
DEPARTMENT OF
AGRICULTURE**

What do you see?

What would you
ask about?



**OREGON
DEPARTMENT OF
AGRICULTURE**



**OREGON
DEPARTMENT OF
AGRICULTURE**

Sample 220372-1: Leaves Veg. Lab. No.: 22-B196	Test No.	Analysis Requested	Analytical Results
	5685	Oxyfluorfen	0.14 ppm MRL=0.050
	10501	Clopyralid	0.017 ppm MRL=0.010 ppm
	30408	Penoxsulam	< 0.010 ppm MRL=0.010 ppm
Sample 220372-2: Leaves Veg. Lab. No.: 22-B197	Test No.	Analysis Requested	Analytical Results
	5685	Oxyfluorfen	0.55 ppm MRL=0.10 ppm
	10501	Clopyralid	0.038 ppm MRL=0.010 ppm
	30408	Penoxsulam	0.013 ppm MRL=0.010 ppm
Sample 220372-3: Leaves/Weeds Veg. Lab. No.: 22-B198	Test No.	Analysis Requested	Analytical Results
	5685	Oxyfluorfen	5.4 ppm MRL=0.50 ppm
	10501	Clopyralid	0.70 ppm MRL=0.010 ppm
	30408	Penoxsulam	0.18 ppm MRL=0.020 ppm
Sample 220372-4: Leaves/Weeds Veg. Lab. No.: 22-B199	Test No.	Analysis Requested	Analytical Results
	5685	Oxyfluorfen	49 ppm MRL=10 ppm
	10501	Clopyralid	7.8 ppm MRL=0.010 ppm
	30408	Penoxsulam	2.1 ppm MRL=0.020 ppm



**OREGON
DEPARTMENT OF
AGRICULTURE**

The Take Home

Pay attention to the topography at and around your application site. It can really change the movement of the product you are applying.



**OREGON
DEPARTMENT OF
AGRICULTURE**



What do you see?

What would you
ask about?



**OREGON
DEPARTMENT OF
AGRICULTURE**



What do you see?

What would you
ask about?



**OREGON
DEPARTMENT OF
AGRICULTURE**



What do you see?

What would you
ask about?



**OREGON
DEPARTMENT OF
AGRICULTURE**



What do you see?

What would you
ask about?



**OREGON
DEPARTMENT OF
AGRICULTURE**

Sample Lab. No.:	Test No.	Analysis Requested	Analytical Results	
Sample AUF210436-1: 21-B205		Backyard Bed Currant Veg.		
	5490	Bifenthrin	<0.010 ppm	MRL=0.010 ppm
	8164	Chlorothalonil	0.062 ppm	MRL=0.010 ppm
Sample AUF210436-2: 21-B206		N. of House Peach Veg.		
	5490	Bifenthrin	<0.010 ppm	MRL=0.010 ppm
	8164	Chlorothalonil	0.12 ppm	MRL=0.060 ppm
Sample AUF210436-3: 21-B207		E. of Shed Cypress Veg.		
	5490	Bifenthrin	<0.010 ppm	MRL=0.010 ppm
	8164	Chlorothalonil	0.092 ppm	MRL=0.010 ppm
Sample AUF210436-4: 21-B208		S. of Shed; Pump Cover Swab		
	5496	Bifenthrin	< 0.001 ug/cm2	MRL=0.0010 ug/cm2
	6355	Chlorothalonil	0.25 ug/cm2	MRL=0.0010 ug/cm2
Sample AUF210436-5: 21-B209		5 ft. From Fenceline Linden Veg.		
	5490	Bifenthrin	0.052 ppm	MRL=0.010 ppm
	8164	Chlorothalonil	11. ppm	MRL=0.010 ppm



**OREGON
DEPARTMENT OF
AGRICULTURE**

THE TAKE HOME

Always consider what is around your site when you are making plans for any applications. Is one way better than the other to prevent possible drift to near by sensitive sites?



**OREGON
DEPARTMENT OF
AGRICULTURE**



What do you see?

What would you ask about?



**OREGON
DEPARTMENT OF
AGRICULTURE**



What do you see?

What would you ask about?



**OREGON
DEPARTMENT OF
AGRICULTURE**



What do you see?

What would you
ask about?



**OREGON
DEPARTMENT OF
AGRICULTURE**



What do you see?

What would you
ask about?



**OREGON
DEPARTMENT OF
AGRICULTURE**



What do you see?

What would you
ask about?



**OREGON
DEPARTMENT OF
AGRICULTURE**



What do you see?

What would you
ask about?



**OREGON
DEPARTMENT OF
AGRICULTURE**



What do you see?

What would you
ask about?



**OREGON
DEPARTMENT OF
AGRICULTURE**

Analysis Requested	Analytical Results		
Glyphosate	25. ppm	MRL=0.032	ppm
Metsulfuron-methyl	0.082 ppm	MRL=0.020	ppm
Chlorsulfuron	0.35 ppm	MRL=0.040	ppm
Aminopyralid	1.9 ppm	MRL=0.010	ppm
Indaziflam	3.6 ppm	MRL=0.010	ppm
Florpyrauxifen	<0.020 ppm	MRL=0.020	ppm

Analysis Requested	Analytical Results		
Glyphosate	23. ppm	MRL=0.032	ppm
Metsulfuron-methyl	0.27 ppm	MRL=0.010	ppm
Chlorsulfuron	0.61 ppm	MRL=0.020	ppm
Aminopyralid	1.6 ppm	MRL=0.010	ppm
Indaziflam	3.2 ppm	MRL=0.010	ppm
Florpyrauxifen	<0.020 ppm	MRL=0.020	ppm



THE TAKE HOME

Be aware of how long it takes for product to quit moving through your application equipment when you shut it off. Know where water may be along your routes so you can be prepared.



**OREGON
DEPARTMENT OF
AGRICULTURE**

Garlon[®] 3A

HERBICIDE

What do you see?

Garlon[®] 4 Ultra

HERBICIDE



OREGON
DEPARTMENT OF
AGRICULTURE

Garlon[®] 3A

HERBICIDE

For the control of woody plants, broadleaf weeds in range and pasture, forests and non-crop areas, including manufacturing and storage sites, rights-of-way such as electrical power lines, communication lines, pipelines, roadsides, railroads, fence rows, non-irrigation ditch banks, and around farm buildings; and applications to grazed areas, and establishment and maintenance of wildlife openings, and in Christmas tree plantations and aquatic sites.

For use in New York State, comply with Section 24(c) Special Local Need labeling for Garlon 3A, SLN NY-110005.

Active Ingredient:

Triclopyr: 2-[(3,5,6-trichloro-2-pyridinyl)oxy] acetic acid, triethylamine salt.....	44.4%
Other Ingredients.....	55.6%
Total.....	100.0%

Acid equivalent: triclopyr - 31.8% - 3 lb/gal

What do you see?

Garlon[®] 4 Ultra

HERBICIDE

For the control of woody plants and vines, and annual and perennial broadleaf weeds on:

- forest sites;
- non cropland areas including: electrical power and utility rights-of-way, industrial sites, non-irrigation ditch banks, pipelines, railroads, roadsides; and
- natural areas and wildlife habitat and management areas;
- including grazed areas on all of these listed sites.

Active Ingredient:

triclopyr: 2-[(3,5,6-trichloro-2-pyridinyl)oxy] acetic acid, butoxyethyl ester.....	60.45%
Other Ingredients.....	39.55%
Total.....	100.00%

Acid equivalent: triclopyr - 43.46% - 4 lb/gal

Refer to insecticide precautionary statements for use.

Notice: Read and follow all directions.

Disclaimer: This product is not a substitute for a professional remediation contractor. Use of Remediation Contractor is unacceptable.

In case of environmental damage, contact your local environmental agency.

Agricultural feeds, drug feeds, and animal feed supplements.

EPA Reg. No. 101-108-01



OREGON
DEPARTMENT OF
AGRICULTURE

THE TAKE HOME

Read the label before you buy, and if not, definitely before you use!



**OREGON
DEPARTMENT OF
AGRICULTURE**

What do you see?
What would you ask?

Maximum Application Rates: The maximum application rates specified in this label are given in units of volume, either fluid ounces, pints or quarts, of this product per acre. The maximum allowed application rates apply to this product combined with the use of any and all other glyphosate- or sulfosate-containing herbicides, either applied separately or in a tank mix, on the basis of total pounds of glyphosate (acid equivalents) per acre. If more than one glyphosate- or sulfosate-containing product is applied to the same site within the same year, ensure that the total of pounds acid equivalent glyphosate does not exceed the maximum allowed.

Do not apply more than 8 quarts of this product (8 lb glyphosate acid) per acre per year for all use sites listed on this label.



OREGON
DEPARTMENT OF
AGRICULTURE

THE TAKE HOME

If you are making an application, you have a responsibility to make sure that your application adheres to the directions on the label.



**OREGON
DEPARTMENT OF
AGRICULTURE**



What do you see?

What would you ask about?

PRECAUTIONARY STATEMENTS

Hazards to Humans and Domestic Animals

WARNING. May be fatal if swallowed. Causes substantial but temporary eye injury. Do not get into eyes or on clothing. Wear protective eyewear such as goggles or safety glasses. Harmful if inhaled, or absorbed through skin. Avoid breathing vapor or spray mist. Avoid contact with skin. Prolonged or frequently repeated skin contact may cause allergic reactions in some individuals. Wash thoroughly with soap and water after handling and before eating, drinking, chewing gum, using tobacco or using the toilet.

Personal Protective Equipment (PPE):

Some materials that are chemical-resistant to this product are listed below. If you want more options, follow the instructions for category E on an EPA chemical resistance category selection chart.

Applicators and Handlers must wear:

- Long-sleeved shirt and long pants
- Chemical-resistant gloves such as barrier laminate, nitrile rubber, neoprene rubber, or Viton
- Shoes plus socks
- Protective eyewear



**OREGON
DEPARTMENT OF
AGRICULTURE**

**PRECAUTIONARY STATEMENTS
HAZARDS TO HUMANS AND DOMESTIC ANIMALS
WARNING**

Harmful or fatal if inhaled or swallowed or absorbed through the skin. May cause irritation of eyes, nose, throat and skin. Avoid contact with eyes and skin. Avoid breathing vapor or spray mist. Keep away from domestic animals and foodstuffs. Do not contaminate or apply onto feed or foodstuffs.

Personal Protective Equipment(PPE):

Some materials that are chemical-resistant to this product are Barrier Laminate, Butyl Rubber \geq 14 mils, Nitrile Rubber \geq 14 mils, or Viton \geq 14 mils. If you want more options, follow the instructions for category F on an EPA chemical resistance category selection chart.

Mixers, loaders, applicators, flaggers, and other handlers must wear:

- Long-sleeved shirt and long pants,
- Shoes plus socks,
- Chemical-resistant gloves,
- a NIOSH-approved dust mist filtering respirator with MSHA/NIOSH approval number prefix TC-21C or a NIOSH-approved respirator with any R, P, or HE filter, and
- Chemical-resistant apron when mixing, loading, cleaning up spills or equipment.



THE TAKE HOME

Personal Protective Equipment is on the label because that is what it takes for you the applicator to remain safe while you work with this product.

It doesn't matter what the weather is or the desires of the applicator. The required PPE is **REQUIRED...**

And while we are there checking PPE out, we will probably look around to see what else is going on...



OREGON
DEPARTMENT OF
AGRICULTURE



What do you see?

What would you
ask about?



**OREGON
DEPARTMENT OF
AGRICULTURE**



What do you see?

What would you ask about?



OREGON
DEPARTMENT OF
AGRICULTURE



What do you see?

What would you
ask about?



**OREGON
DEPARTMENT OF
AGRICULTURE**

What do you see?

What would you ask about?



**OREGON
DEPARTMENT OF
AGRICULTURE**



What do you see?

What would you ask about?



OREGON
DEPARTMENT OF
AGRICULTURE

What do you see

What would you
ask about?



**OREGON
DEPARTMENT OF
AGRICULTURE**

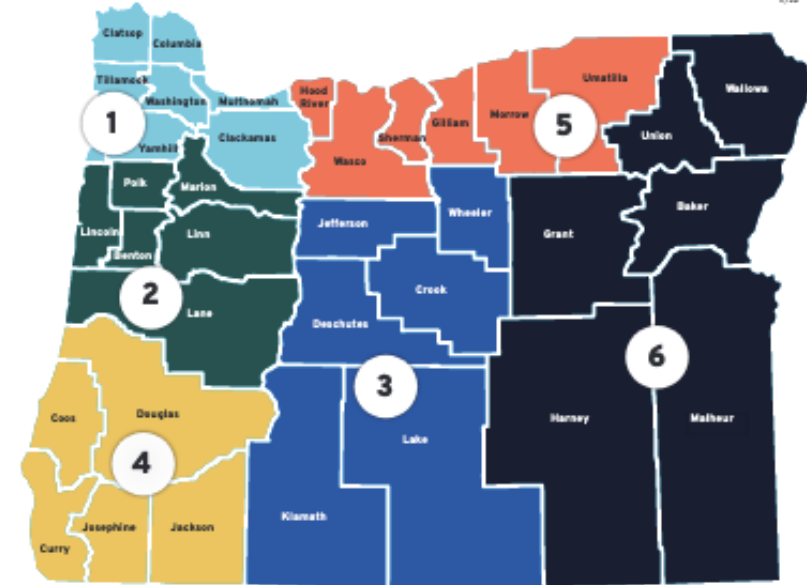
THE TAKE HOME

Be good stewards. Make sure your equipment is in good, working order. Don't leave partial pesticides laying around out in the open.

Properly dispose of your empties.



**OREGON
DEPARTMENT OF
AGRICULTURE**



1 Clackamas, Clatsop, Columbia, Multnomah, Tillamook, Washington, Yamhill

- Ben Beeles: 503.986.5140
ben.beeles@oda.oregon.gov
- Amy Cross: 971.600.5943
amy.cross@oda.oregon.gov
- Keawe Mollifua: 503.551.2977
keawe.mollifua@oda.oregon.gov
- Brittney Owen: 503.986.4715
brittney.owen@oda.oregon.gov
- Heather Rickenbach: 503.508.0467
heather.rickenbach@oda.oregon.gov

2 Benton, Lane, Lincoln, Linn, Marion, Polk

- Tash Wilson: 541.406.9616
tash.wilson@oda.oregon.gov
- Vacant

3 Crook, Deschutes, Jefferson, Klamath, Lake, Wheeler

- Paul Khokhar: 503.508.3391
paul.khokhar@oda.oregon.gov

4 Coos, Curry, Douglas, Jackson, Josephine

- Jeff Isler: 541.840.8229
jeff.isler@oda.oregon.gov

5 Gilliam, Hood River, Morrow, Sherman, Umatilla, Wasco

- Cory Cooley: 541.564.5962
cory.cooley@oda.oregon.gov

6 Baker, Grant, Harney, Malheur, Union, Wallowa

- Matt Dowless: 541.255.8968
matt.dowless@oda.oregon.gov

Enforcement Case Reviewers

- Peter Colistro: 503.586.6471
peter.colistro@oda.oregon.gov
- Ann Ketter: 971.388.7810
ann.ketter@oda.oregon.gov
- Jenny Price: 503.986.4653
jennifer.price@oda.oregon.gov
- Patrick Reinhart: 971.600.5523
patrick.reinhart@oda.oregon.gov

Lead Investigator

- Andrea Sonnen: 971.301.0659
andrea.sonnen@oda.oregon.gov

Salem Office Address

635 Capitol St. NE, Salem 97301

Final Take Homes

Don't Be Complacent!

Don't Be Ignorant!

Don't Be Arrogant!

Get to know your neighbors and your local pesticide investigator.

Questions?

Andrea Sonnen

andrea.sonnen@oda.oregon.gov

971-301-0659



**OREGON
DEPARTMENT OF
AGRICULTURE**