



**SOWING HISTORY, GROWING CULTURE, PLANTING LANGUAGE:
CSKT'S WHITEBARK BIO CULTURAL RESTORATION.**



Presented by ShiNaasha Pete

Confederated Salish and Kootenai Tribal Forestry

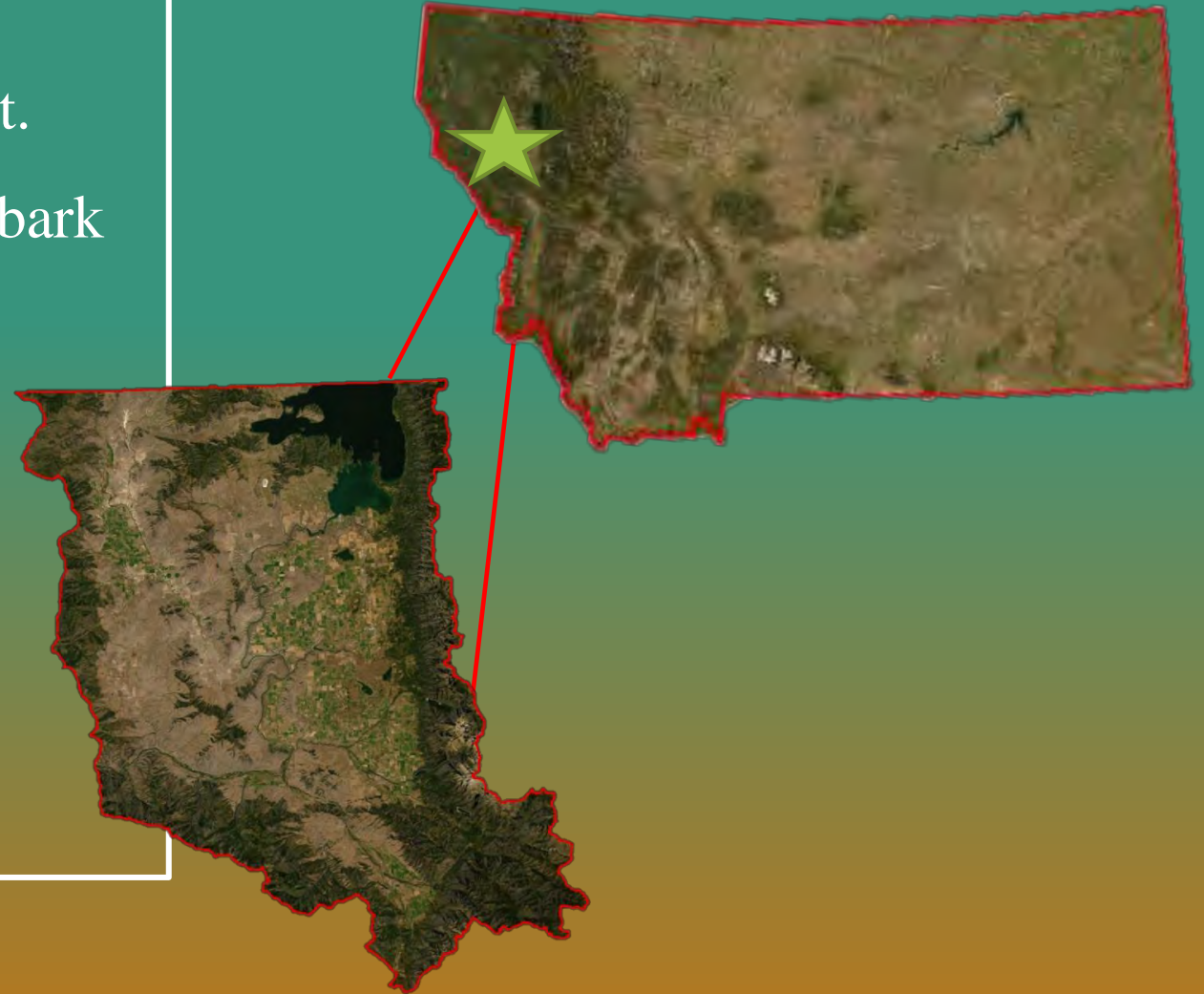
Reforestation Forester

- **An Overview of Whitebark Pine (WBP) on the Flathead Reservation.**
- **Ecosystem Management of WBP implements culture considerations**
- **Implementing our management plans to move beyond current and future obstacles.**
- **Current CSKT Forestry's Methods for WBP Restoration.**



WHITEBARK PINE ON THE FLATHEAD RESERVATION

- 1.3 million acres (526,091 hectares)
- 256,757 acres (103,905 hectares) of forest.
- 105,000 acres (42,492 hectares) of Whitebark pine habitat.
- Forest Type
 - Subalpine series to Timberline series
- Habitat Type
 - *ABLA/PIAL/VASC*



ECOSYSTEM MANAGEMENT EMPHASIZES CSKT CULTURE











HOW WE WILL IMPLEMENT THE RESTORATION
PLAN TO MOVE BEYOND
CURRENT AND FUTURE OBSTACLES.



Boulder 2700 Fire, 2021



Little Money Fire, 2021

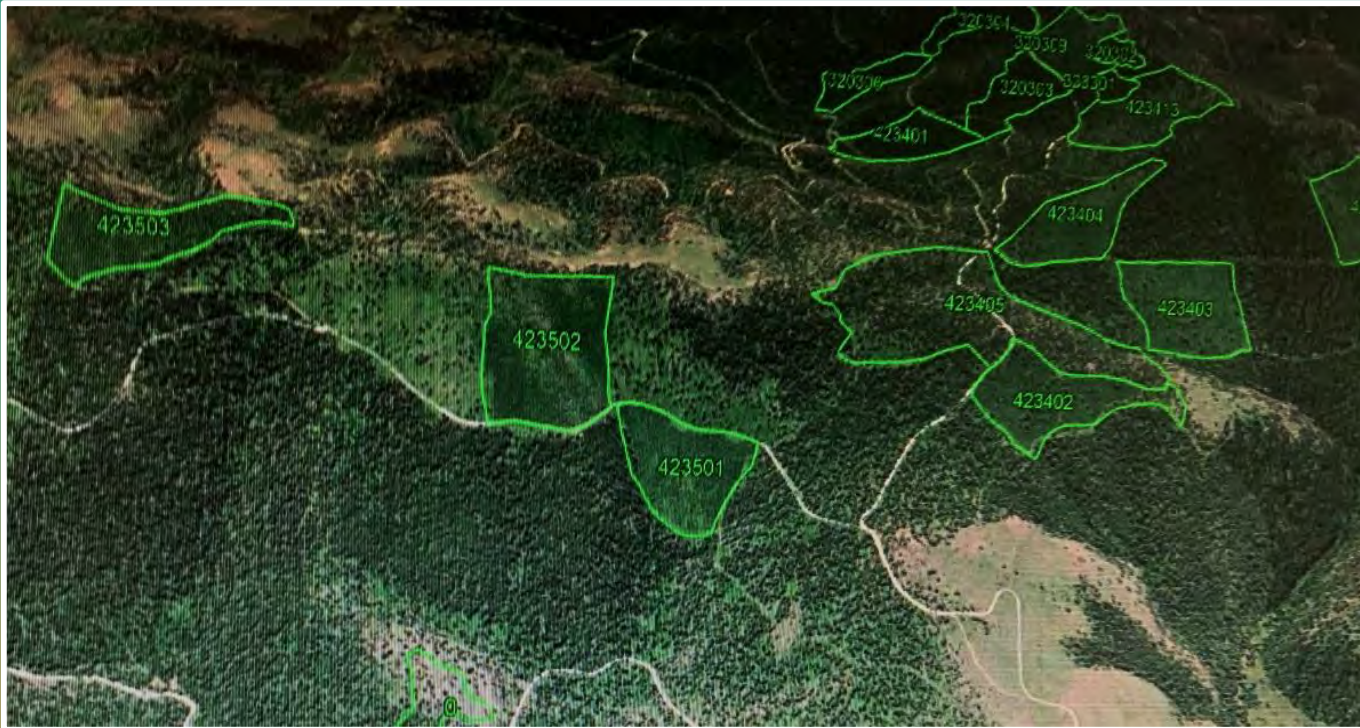


Crooks Fire, 2021





THE BEGINNING OF OUR WHITEBARK PINE RESTORATION



WBP Restoration Units,
Boulder 2700 Salvage Sanitation.



WBP CV Map, Boulder Area

CSKT FORESTRY METHODS FOR WBP RESTORATION



CONE COLLECTING



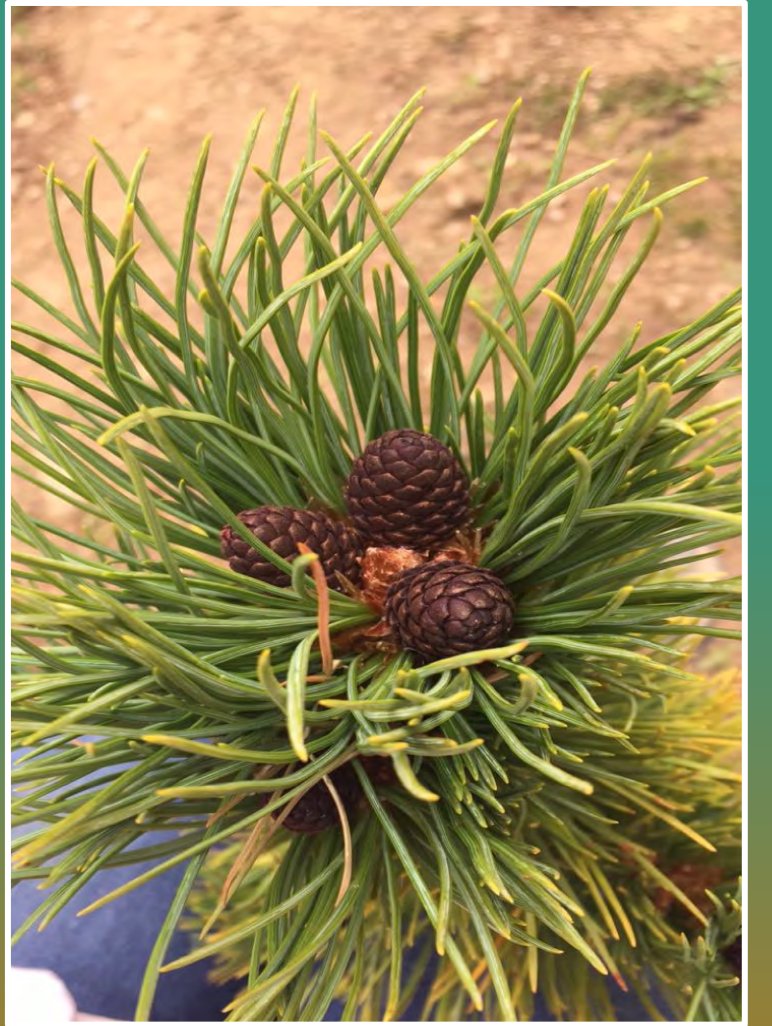












REFERENCES

1. Climate action: Impact and Solutions [manuscript]. CRC Press - Taylor & Francis Group. Chapter 7, Scilpalq: Biocultural restoration of whitebark pine on the Flathead Reservation.
2. Confederated Salish and Kootenai Tribes. Flathead Indian Reservation management plan: an ecosystem approach to tribal forest management. Pablo (MT): CSKT; 2000.
3. Pfister RD, Kovalchik BL, Arno SF, Presby RC. Forest habitat types of Montana. Ogden (UT): U.S. Government Printing Office; 1977.

Figure Captions

Figure 7.1. Caged whitebark pine cones after collection by CSKT tree climbers in autumn. Photo credit: ShiNaasha Pete

•

