

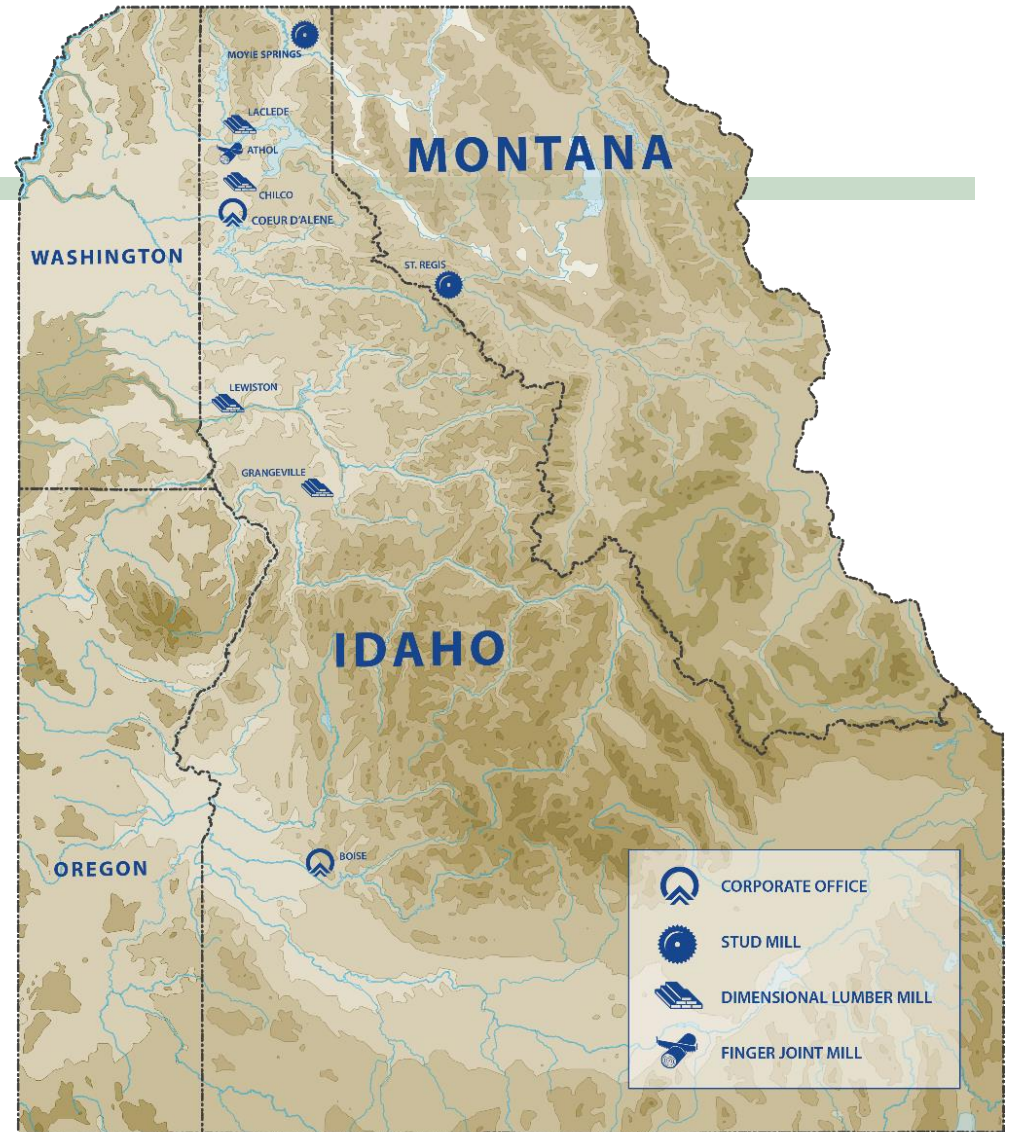


Federal Forest Lands 2020

Tom Schultz, VP Governmental Affairs

Our Mission

“To enhance the lives and livelihoods of our employees, customers, partners and the communities in which we operate by providing the earth’s best renewable building products.”



Forest Health Challenges

Wildfire Impacts on Timber Industry

Overstocked/Weakened Stands



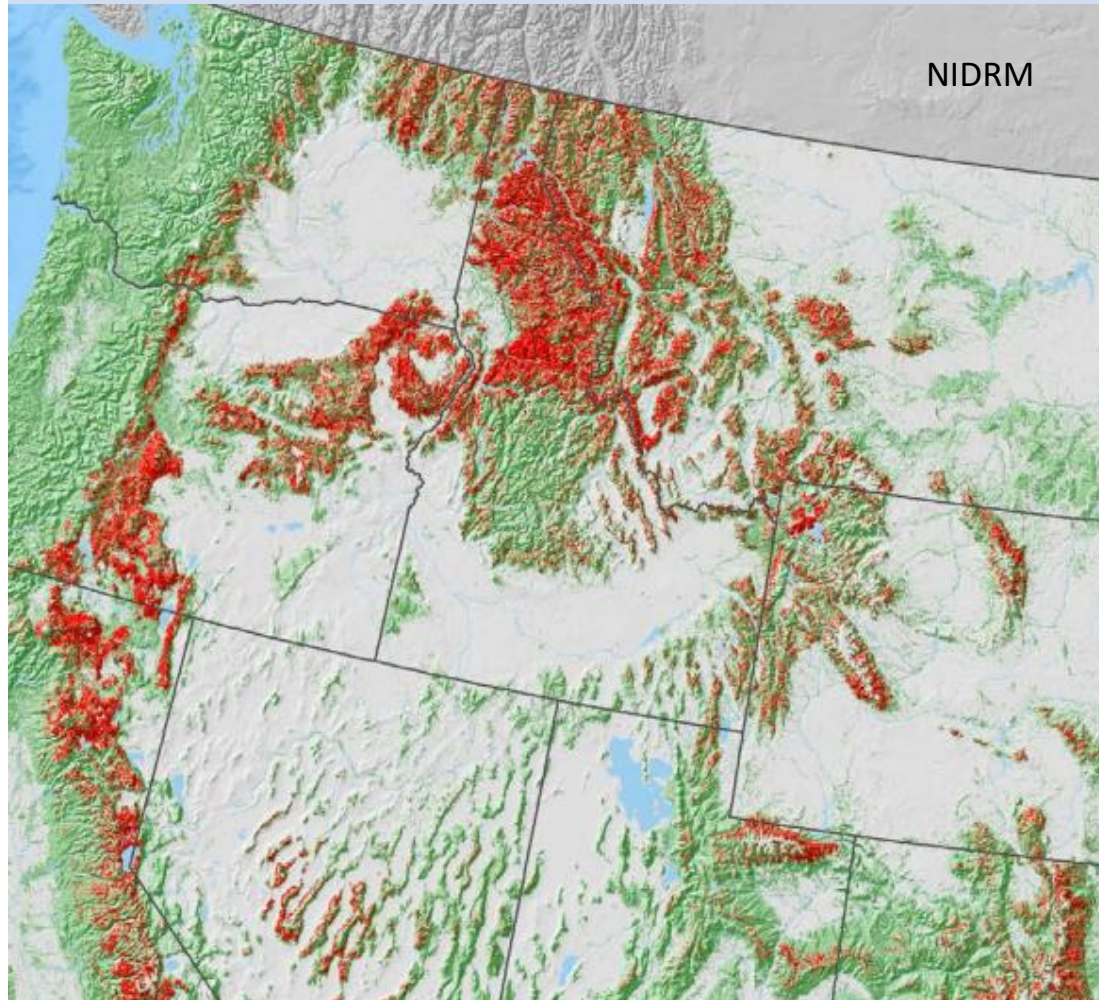
Fire



Mortality



Insects & Disease



National ranking for percentage of treed acres at risk of greater than 25% basal area loss:

#1 - Idaho

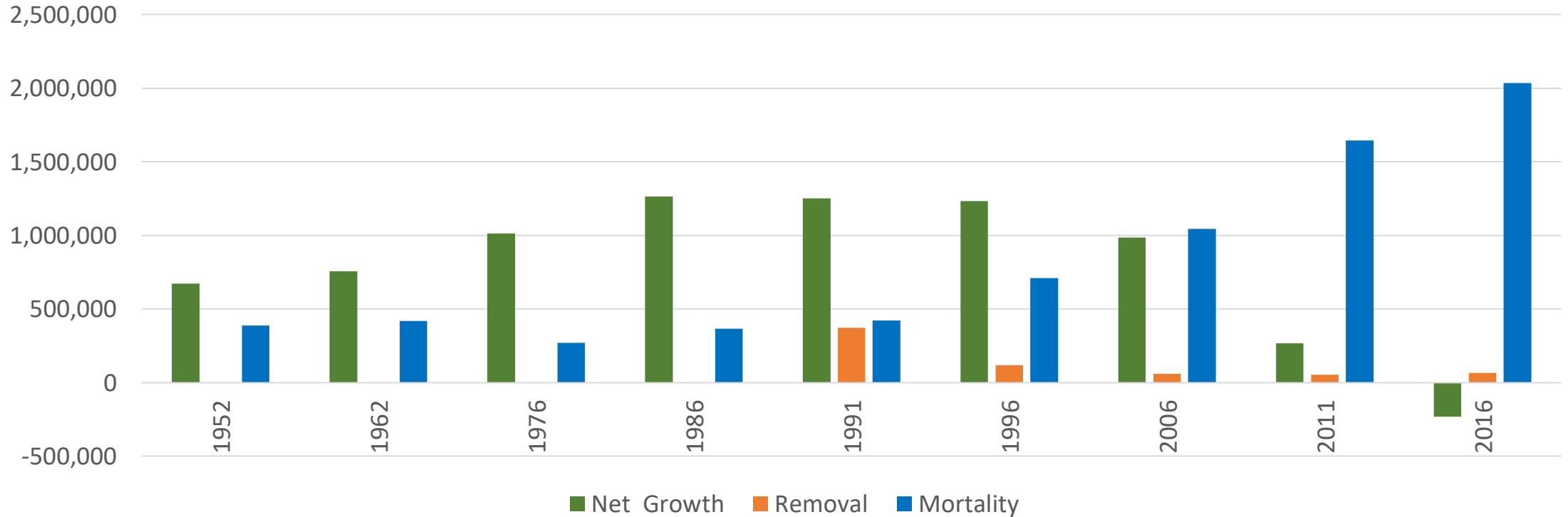
- 7,862,018 treed acres at risk
- 28% of treed acres at risk

#3 - Montana

- 7,655,558 treed acres at risk
- 21% of treed acres at risk

Forest Health

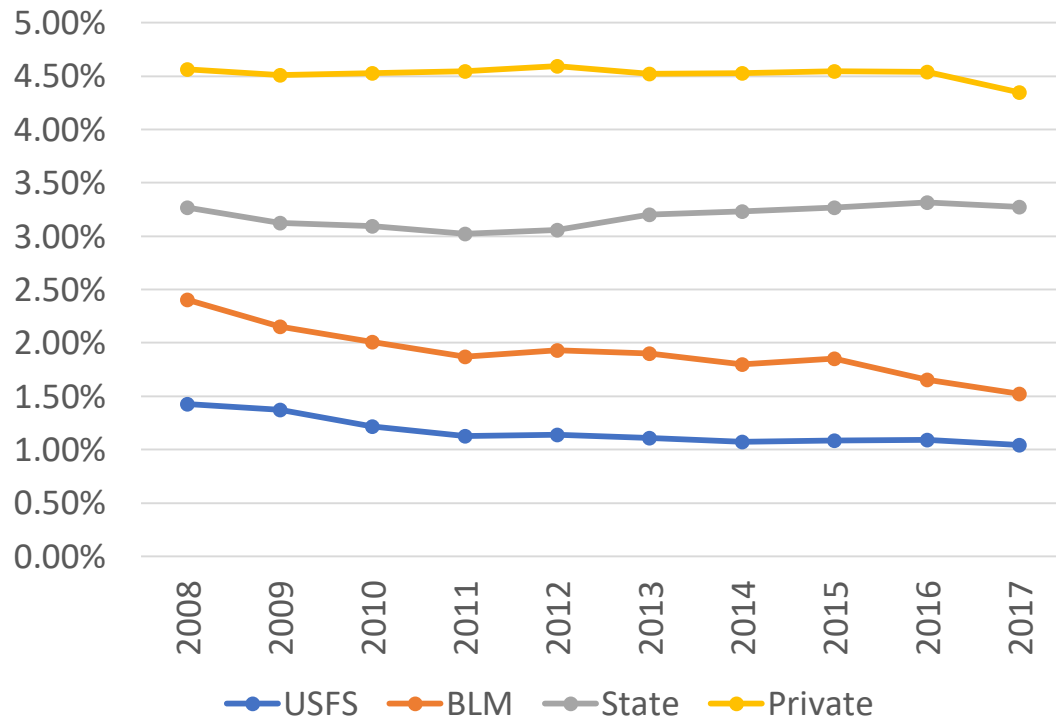
Intermountain Region National Forests Softwoods, Growth, Removal and Mortality (Mcuft)



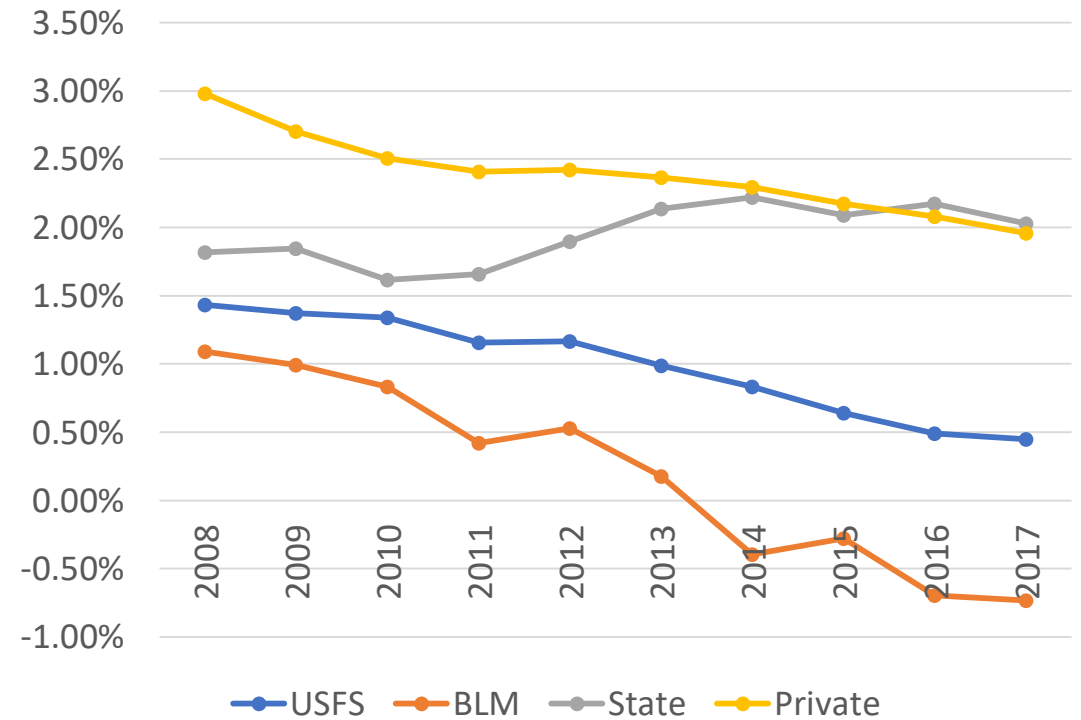
Intermountain Region refers to Arizona, Colorado, Idaho, Montana, Nevada, New Mexico, Utah and Wyoming.

Forest Health

Idaho, Net Growth as % of BF Volume by Ownership



Montana Net Growth as % of BF Volume by Ownership



Created from FIA data

The negative percentages mean that mortality is exceeding growth.

Forest Health

Mortality is reducing the growth of the existing timber resource in Idaho and Montana over the last ten years.

Idaho



For every 1
merchantable
cubic foot of
wood harvested,
3 cubic feet
die in the forest.

Montana



For every 1
merchantable
cubic foot of
wood harvested,
6 cubic feet
die in the forest.

Solutions



GNA GOOD NEIGHBOR
AUTHORITY


Northwest States GNA Program Metrics through 2019

State	ID	MT	OR	WA
Master Agreement Signed	2016	2016	2016	2017
Current full-time employees	12	6	8	14.75
FY 2020 State investment in federal lands (\$M)	0.265	1.8	1.6	3.15
Timber sales sold to date	12	4	8	6
Timber sale volume sold to date (million board feet)	51.4	9.7	13.0	13.6
Total treatment acres to date	4,748	1,200	2,400	1,600
Sale revenues receipted to date (\$M)	2.8	0.4	0.6	1.3

❖ Timber volume sold by National Forests assisted by Idaho GNA increased from 129.8 million board feet in FY2015 to a projected 164.2 million board feet in FY2020, a 27.4% increase.

Commercial Timber Sales: GNA 2020 Idaho & Montana



Commercial Timber Projects			
			
State	# of Projects	Acres	Estimated Harvest Volume (MBF)
Montana	10	2,987	26,080
Idaho	7	1,787	20,444
Total	17	4,774	46,524

Non-Timber GNA Projects:

Road work, aquatic improvements, NEPA, burns, noxious weed management, reforestation, Lidar mapping, stand exams....

Restoration Projects		
State	# of Projects	Estimated Cost
Montana	3	
Idaho	29	\$1.5 million
Total	32	

Shared Stewardship

“All Hands, All Lands”

Shared Stewardship

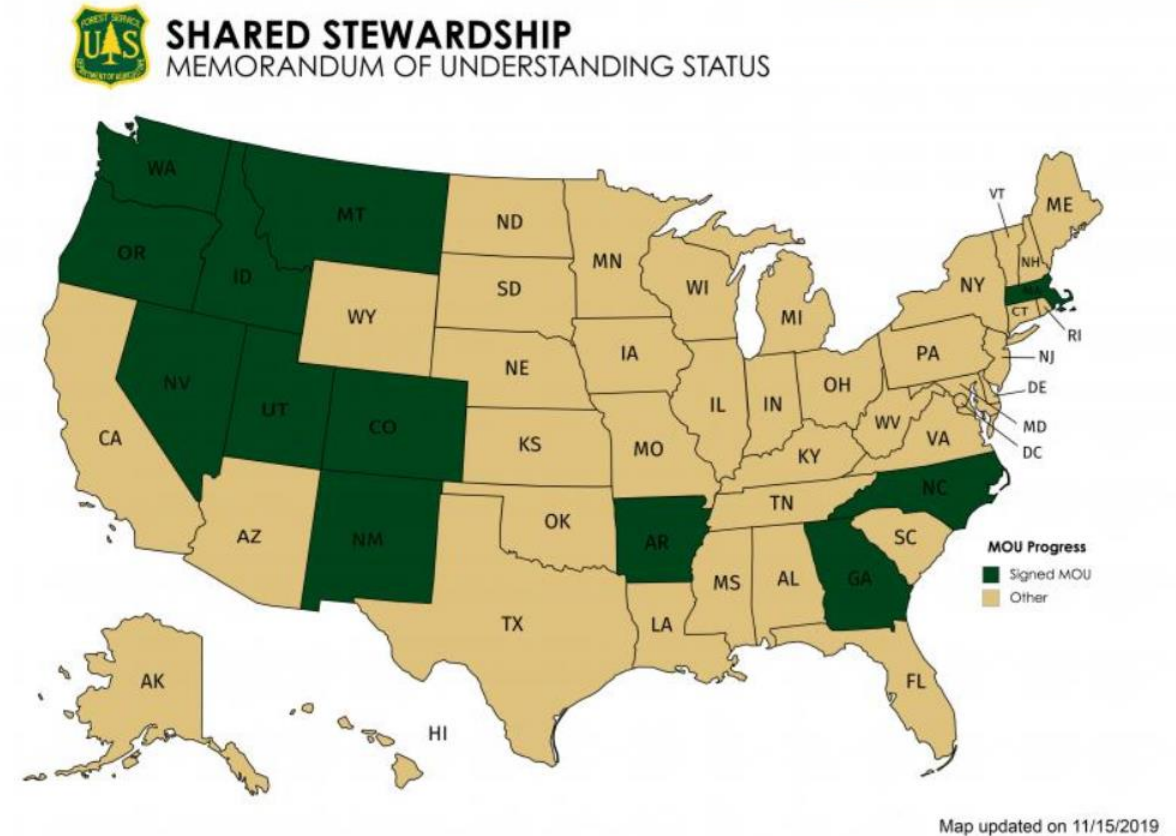
“Mutual priorities at scale to produce an outcome as measured by volume.”

Jim Hubbard,

Undersecretary for Natural Resources and the Environment

“Shared stewardship simply means we share decision space with states, partners and tribes. Together we choose the right tools, the right places and the appropriate scale to invest our resources. We jointly set priorities that incorporate each other’s knowledge, skills and personnel.”

– **Vicki Christiansen**
Chief, US Forest Service



12 states and the Western Governor’s Association have signed Shared Stewardship MOUs with the Forest Service.

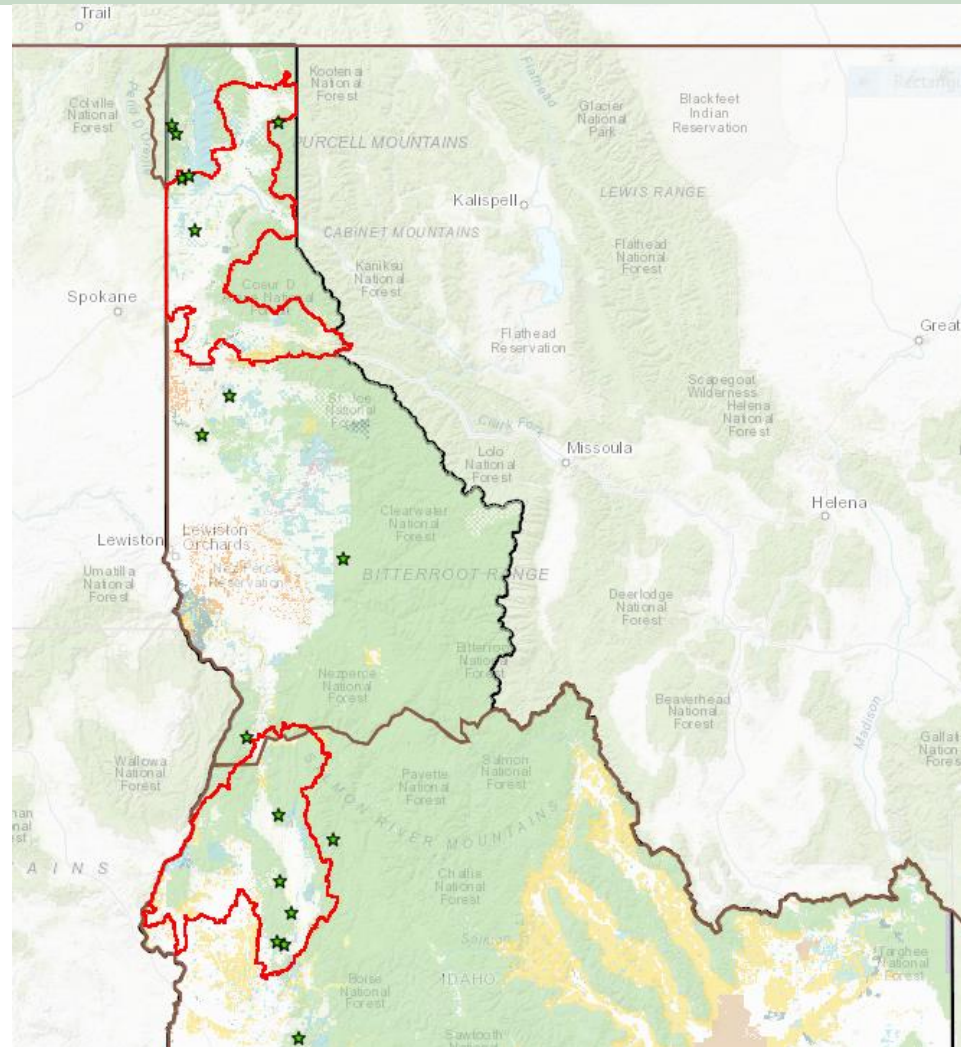


Shared Stewardship Agreement in Idaho

Prioritize investment decisions directly with states using the most advanced science tools to increase the scope and scale of critical forest treatments that protect communities, create and sustain jobs, and improve forest health and resiliency.

- **6.1 million acres** designated at “high risk” for insect and disease infestation and potential catastrophic wildfire
- Goals:
 - Double the acres treated in federal forests in Idaho by 2025
 - Designate two priority landscapes
 - Create a Shared Stewardship Advisory Group

Idaho Priority Areas



Northern Idaho Priority Landscape	
Ownership	Acres
US Forest Service	621,400
Bureau of Land Management	67,000
State Endowment Land	144,400
Private	1,045,100
Tribal	3,800
Other Ownership	148,400
Total Acres	2,030,100
Southern Idaho Priority Landscape	
Ownership	Acres
US Forest Service	1,123,500
Bureau of Land Management	154,300
State Endowment Land	169,100
Private	804,600
Other Ownership	33,000
Total Acres	2,284,500



Shared Stewardship Advisory Group

9 non-agency members & 4 agency members

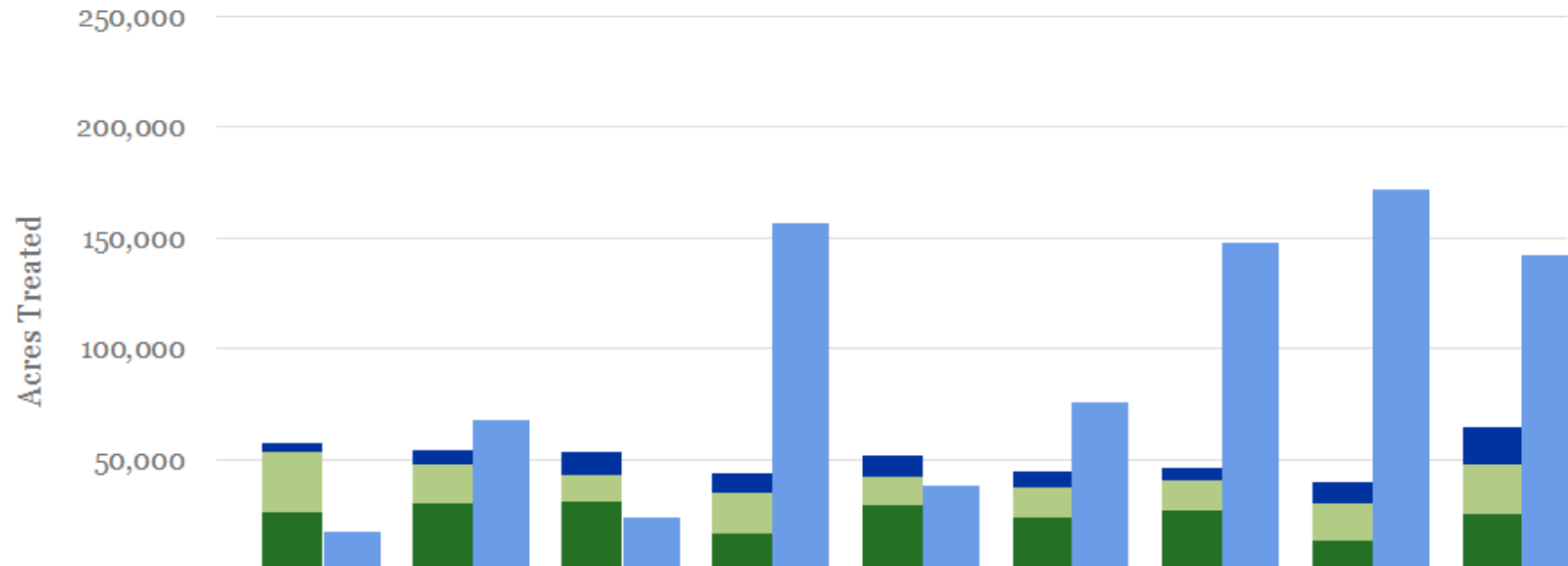
Advise the Idaho Department of Lands (IDL) in successfully implementing Shared Stewardship

Role and Function of Group in Idaho

1. Identify process, policy, funding, and capacity barriers that impede implementation of Shared Stewardship
2. Problem-solve and find creative solutions to the challenges identified in #1
3. Act as a voice for various interests
4. Develop metrics of success and a common set of principles
5. Communicate and advocate for Shared Stewardship

Idaho National Forest Suitable Acres Managed 2010-2018

On average,
1.2%
of Idaho's
suitable acres
are treated
each year



	2010	2011	2012	2013	2014	2015	2016	2017	2018
Wildfire Acres Deemed Beneficial	16,870	69,140	23,206	155,528	36,905	76,032	146,768	172,739	141,612
Commercial Harvest Acres	3,887	6,244	10,536	8,813	9,542	7,090	6,036	9,489	16,580
Mechanical Fuels Treatment Acres	26,855	17,737	11,636	17,855	12,778	13,702	13,754	17,041	22,198
RX Fire Acres Treated	26,522	30,393	31,179	16,785	29,236	23,475	26,597	13,017	25,701

*Total Suitable Acres: 4,202,010

*Fuels Treatment: mechanical removal (non-commercial harvest), prescribed fire, and naturally occurring wildfire deemed beneficial to the landscape.

Desired Results

To increase the pace and scale of treatment on national forests, Idaho will need to commit resources to increasing activity as outlined in the Shared Stewardship agreement signed in December 2018.



Status Quo

Treating the forests at our current pace, it will take ~**121 years** to treat Idaho's 6.1 million acres at risk.



MOU 1.0

Treating the forests by only doubling the current pace of commercial harvest, it will take ~**103 years** to treat Idaho's 6.1 million acres at risk.



MOU 2.0

Treating the forests at double the current pace (commercial harvest & hazardous fuels treatments), it will take ~**60 years** to treat Idaho's 6.1 million acres at risk.



IDAHO FOREST
G R O U P

Thank You

Tom Schultz, VP of Government Affairs
tom.schultz@idfg.com