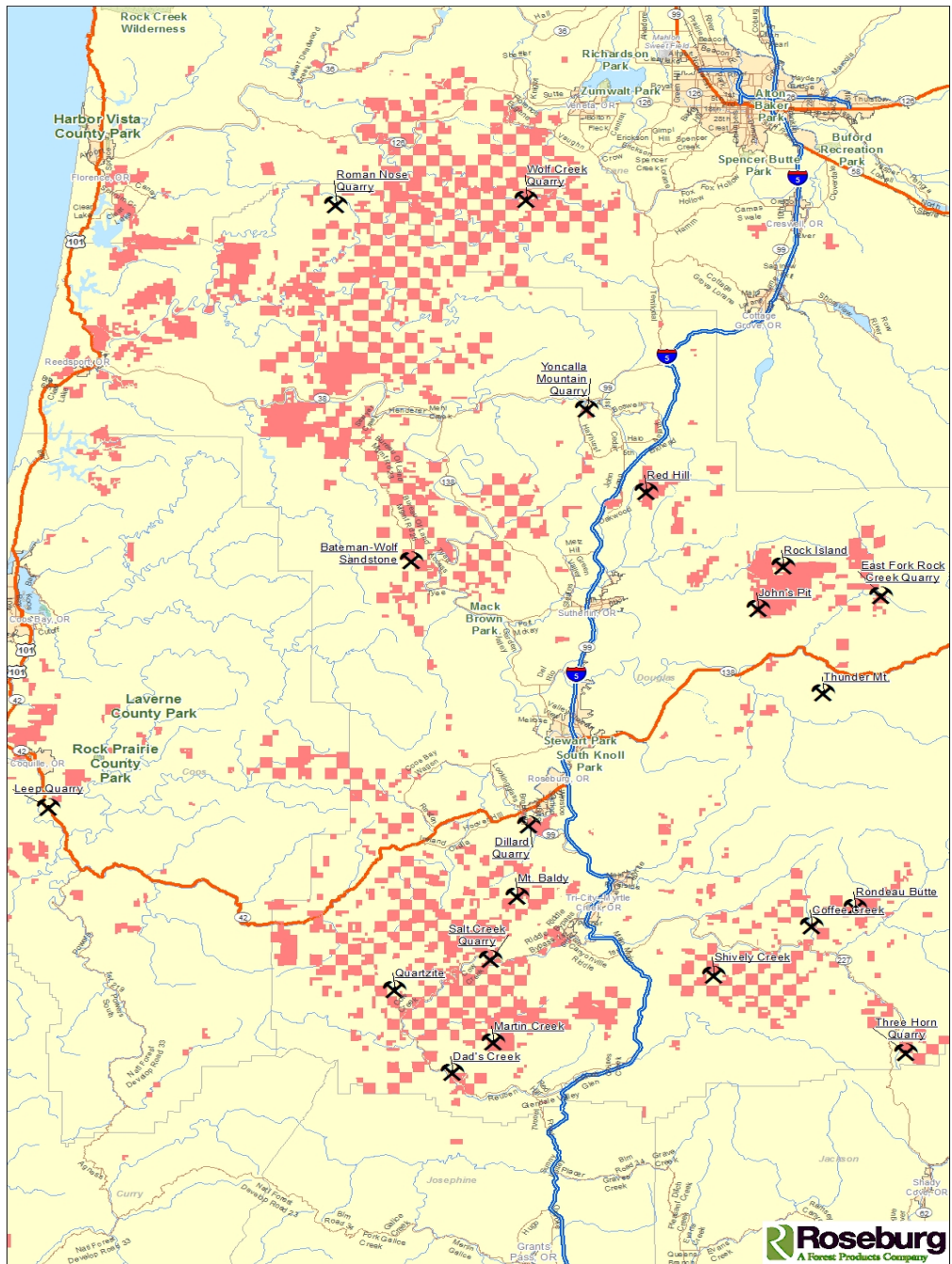


Rock Economics



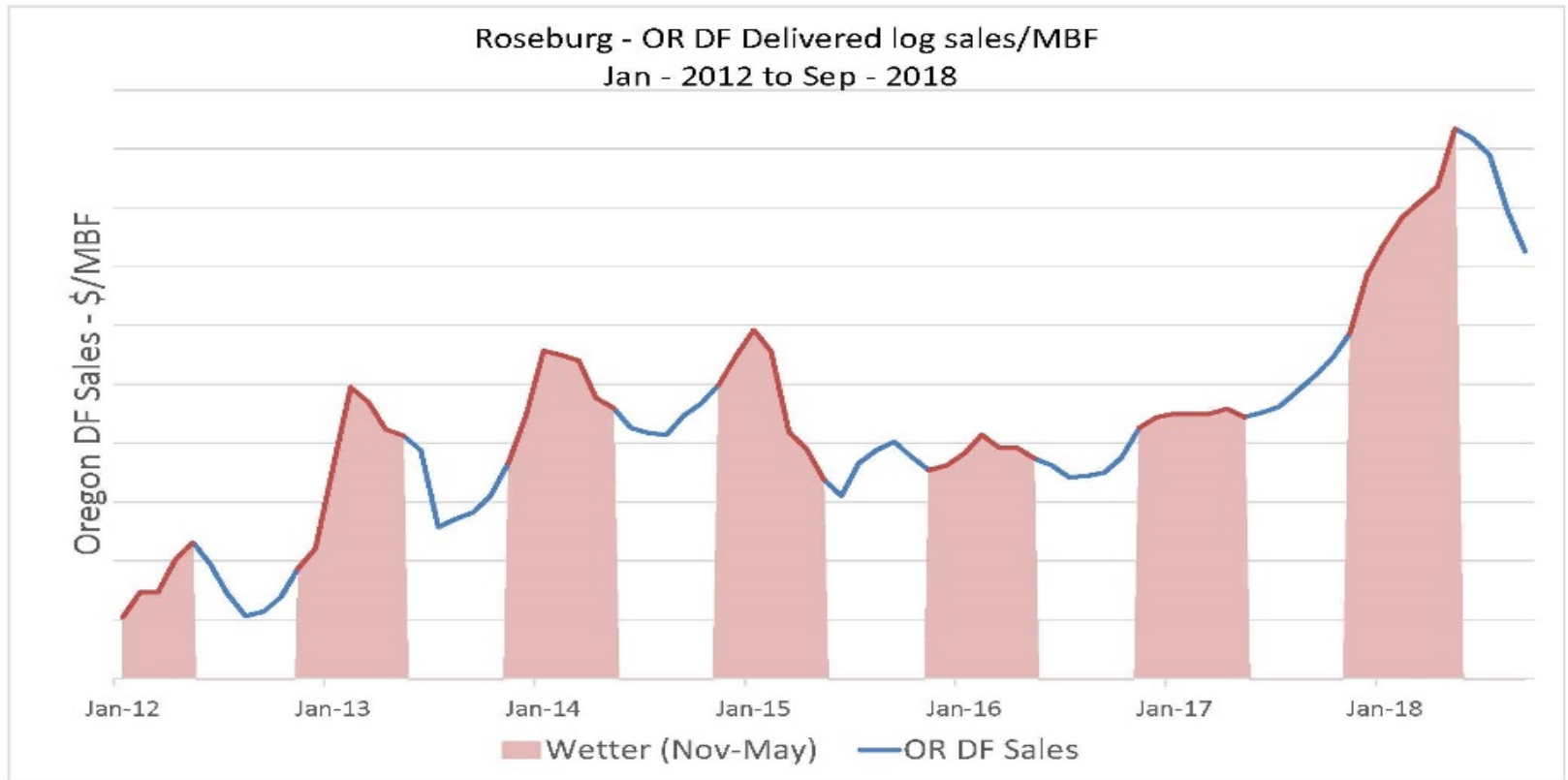
Scott Hoffine

January 17, 2019





\$/MBF Wet vs Dry







Pit Run Quarry vs Hard Rock Quarry

Pit Run Quarry



Hard Rock Quarry



Pit Run Road



Pit Run Capped



Crushed Rock Road



Overburden Removal



Drilling & Shooting



Crushing



Expensive Crushing



Hauling and Processing



Haul Road Maintenance



High Elevation



DOGAMI

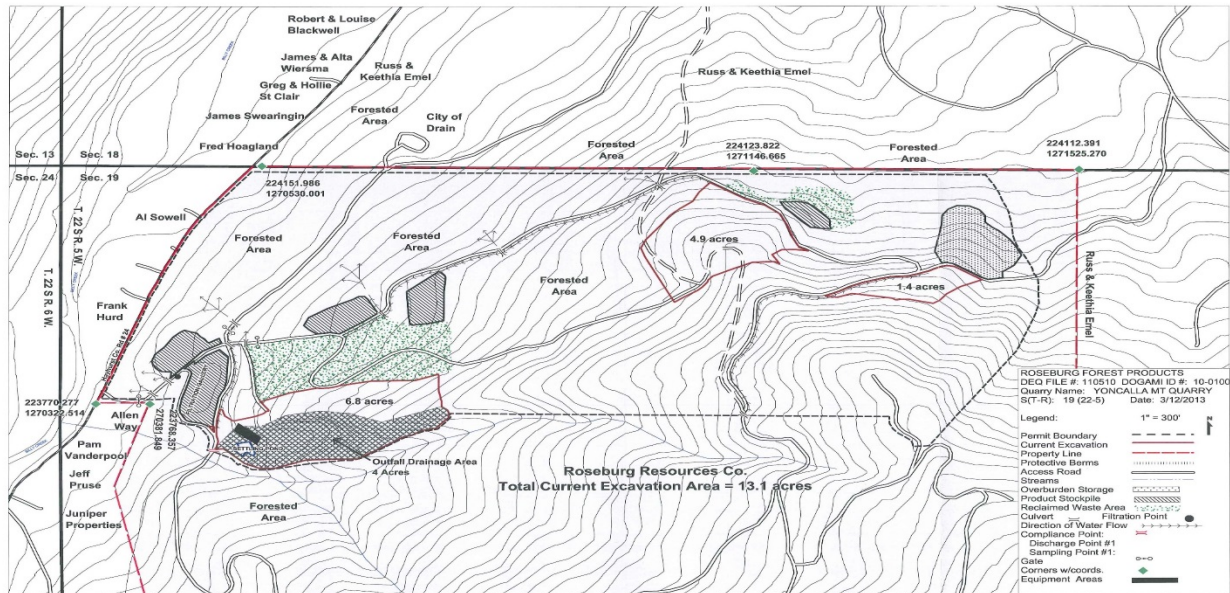
DOGAMI- Oregon Department of Geology and Mineral Industries

An Operating Permit is required for material extraction activity that exceeds one acre of disturbance in any 12-month period and/or 5,000 cubic yards of excavation in any 12-month period. When total disturbance exceeds five acres, an Operating Permit is required unless the activity is exempt.

Water Quality Permitting

NPDES 1200-A permit

Storm Water Control Plan and Monitoring



MSHA

MSHA- Mine Safety and Health Administration

Stand Alone Topic, We Don't Have Time

