

Candidate Conservation Agreements with Assurances (CCAAs): Oregon Demonstration Project

Jeff Everett, Sage-Grouse Coordinator
US Fish & Wildlife Service, Portland, OR





Tribal Lands in the Range of the Greater Sage Grouse

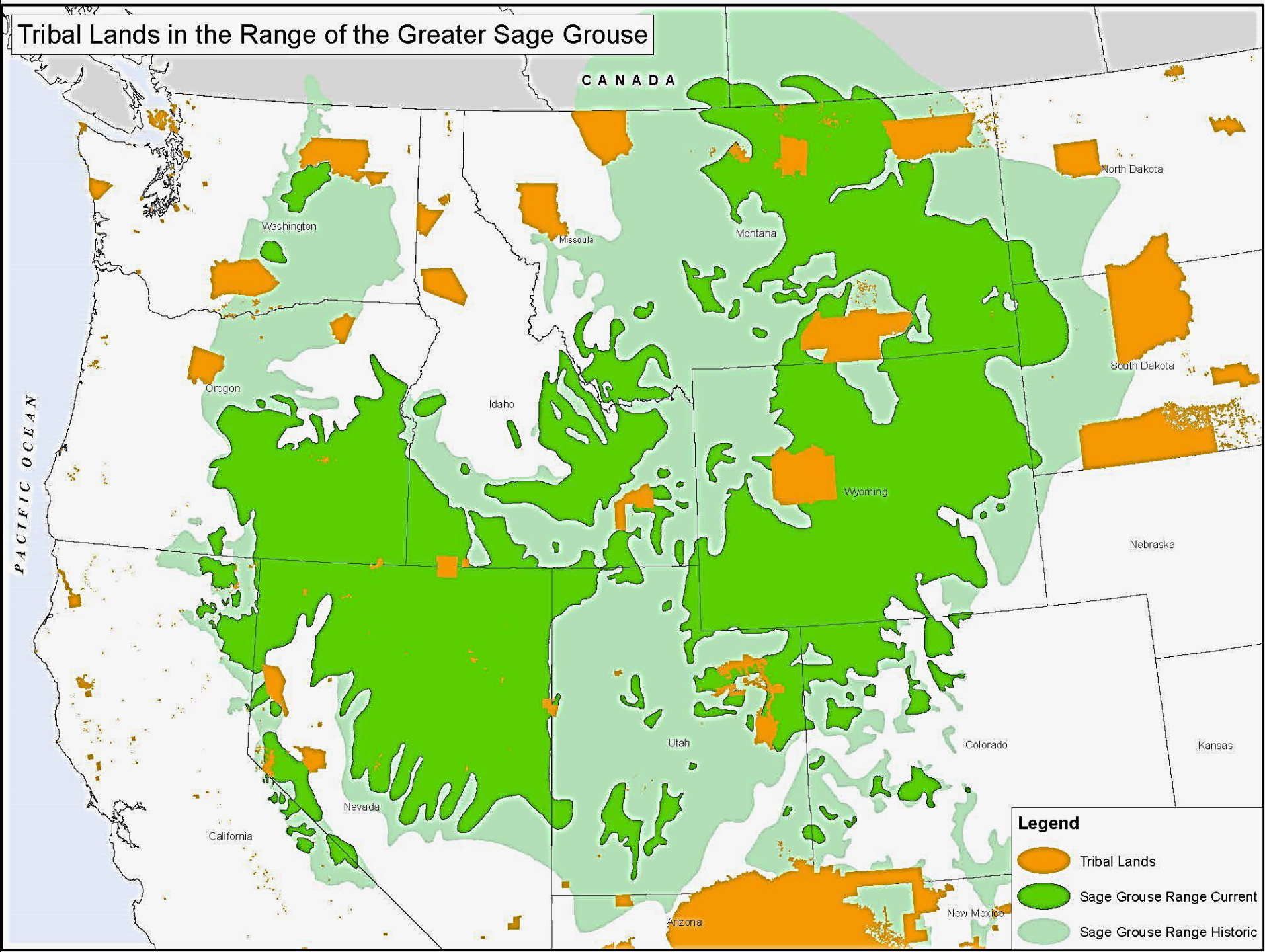
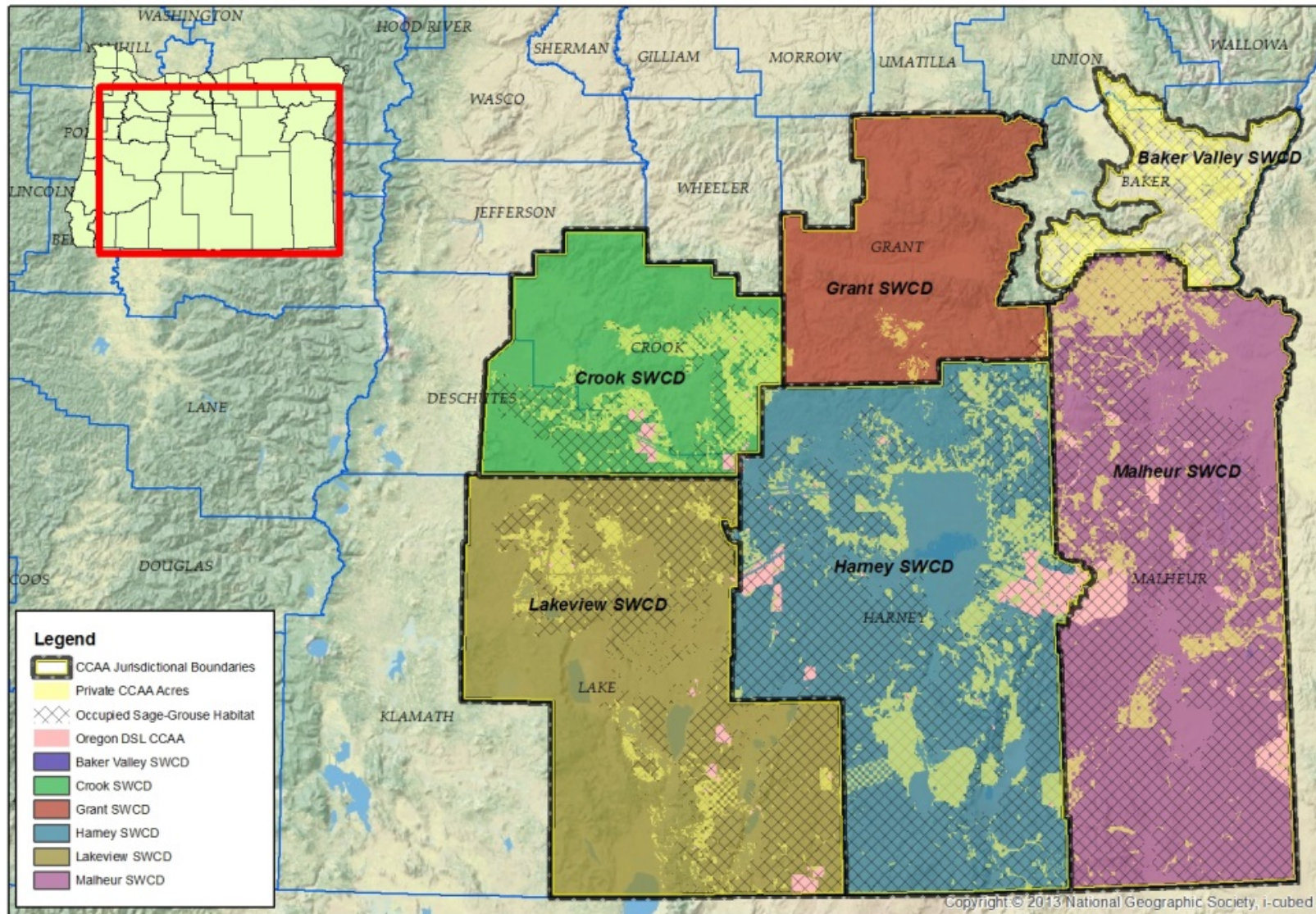




Photo: Tom Koerner 2016

Greater Sage-Grouse Candidate Conservation Agreements



Map Created by: Angela Sitz, U.S. Fish and Wildlife Service
February 12, 2015

No warranty is made by the U.S. Fish and Wildlife Service as to the accuracy, reliability, or completeness of these data for individual or aggregate use with other data. Original data were compiled from various sources. Spatial information may not meet National Map Accuracy Standards. This information may be updated without notification.



Basic Approach

- All enrolled private landowners must agree to: Maintain contiguous habitat by avoiding further fragmentation.
- Additionally, Conservation Measures are in place for each threat.
- In many cases, this means changes in grazing management, combating invasive species, restoration, and revegetation.







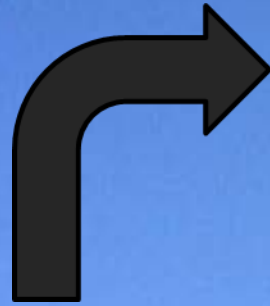






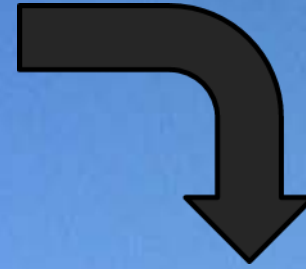
USFWS

Funding
Technical assistance
Field work



USFS

Funding
Technical assistance
Field work



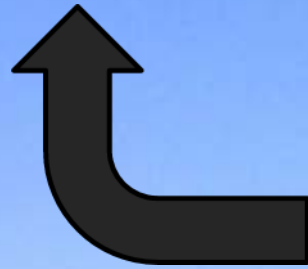
CTUIR

Nursery
Plant materials
Field work



Private Landowners

Habitat
In-kind contributions









Questions?

