



How Have the 2014, 2015 and 2016 Forest Fires Influenced DNR Planting Programs?

Phil Anderson
Washington DNR
Phil.Anderson@dnr.wa.gov
March 7, 2017



Presentation Outline

- Region Overview
- 2014, 2015 & 2016 Fires
- Salvage Work
- Reforestation Efforts
- Post Fire Reforestation Financial Needs



DNR Northeast Region



- Headquartered in Colville with district offices in Colville, Deer Park, Loomis and Omak.
- 2.5 million acres of state and private forestlands in Ferry, Okanogan, Pend Oreille, Spokane and Stevens counties, and the northern third of Lincoln County.
- 567,000 trust acres
- 331,000 forestland acres.



2014, 2015 & 2016 Fires



2014, 2015 & 2016 Fires

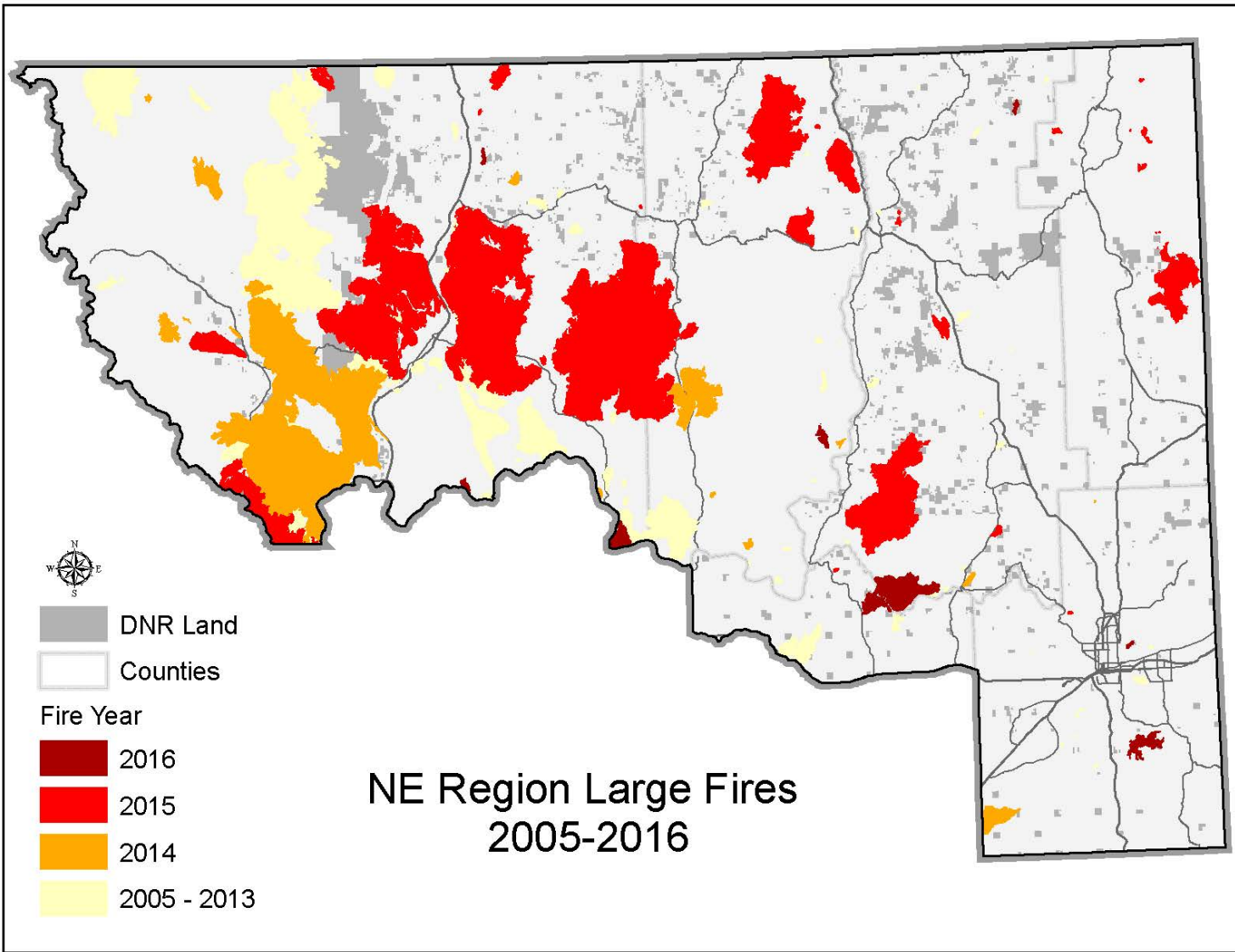
Northeast Region

Burned Acres (All Owners):

- 2014 – 309,527 Acres
- 2015 – 736,927 Acres
- 2016 – 39,301 Acres
- 2005 – 2016
1,511,150 Acres

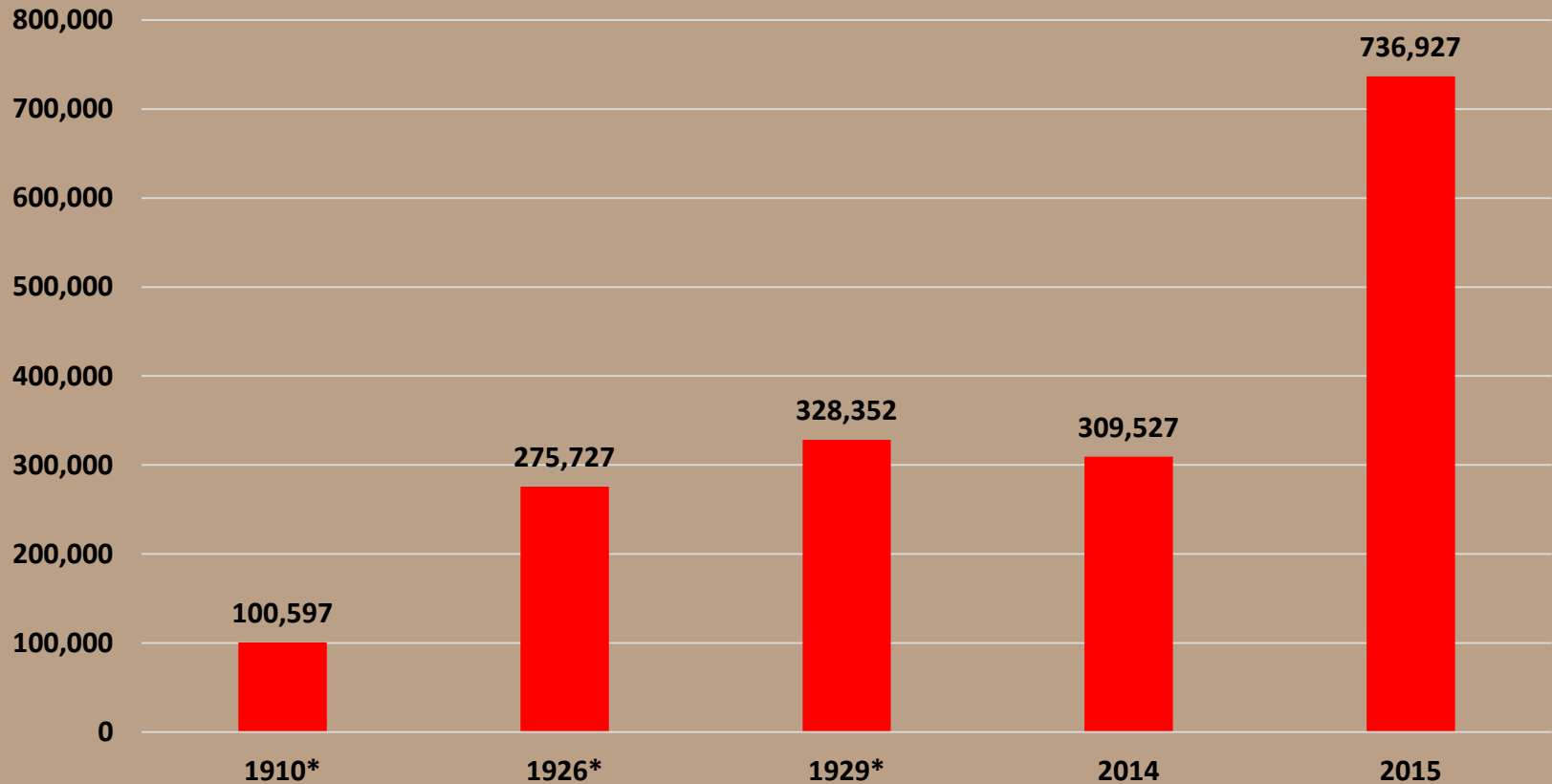
(Approximately 18% of all land in the Northeast Region)





Five Worst Fire Seasons 2009-2016

Acres



Note* Acreage Figures for 1909, 1926 and 1929 are incomplete.



2014, 2015 & 2016 Fires

Northeast Region

Burned Trust Acres

- 2014 – 48,974 Acres
- 2015 – 67,149 Acres
- 2016 – 1,039 Acres

(Approximately 20% of all trust lands in the region)



2014, 2015 & 2016 Fires

Forested Trust Acres Burned

- 2014 – 14,822 Acres
- 2015 – 47,193 Acres
- 2016 – 951 Acres

(Approximately 19% of all
forested trust lands in the
Region)



2014, 2015 & 2016 Fires

Site Productivity*

- 4,424 Acres - Blank
- 44,298 Acres < SI 70
- 14,244 Acres > SI 70

* Base on Fifty Year Site Index.

Lowest Site Index - 27

Highest Site Index - 110



Salvage



Salvage Prioritization

Initial Prioritization Criteria:

- Stand Volumes
 >7,000 Bd Ft/Acre
- Site Indices > 70
- Slopes < 30%
- Slope Stability Ratings less than 2.
- Proximity of Volume to Existing Roads.
- Burn Severity Data, If available.



2005 - 2017 Timber Harvest

Average Northeast Region

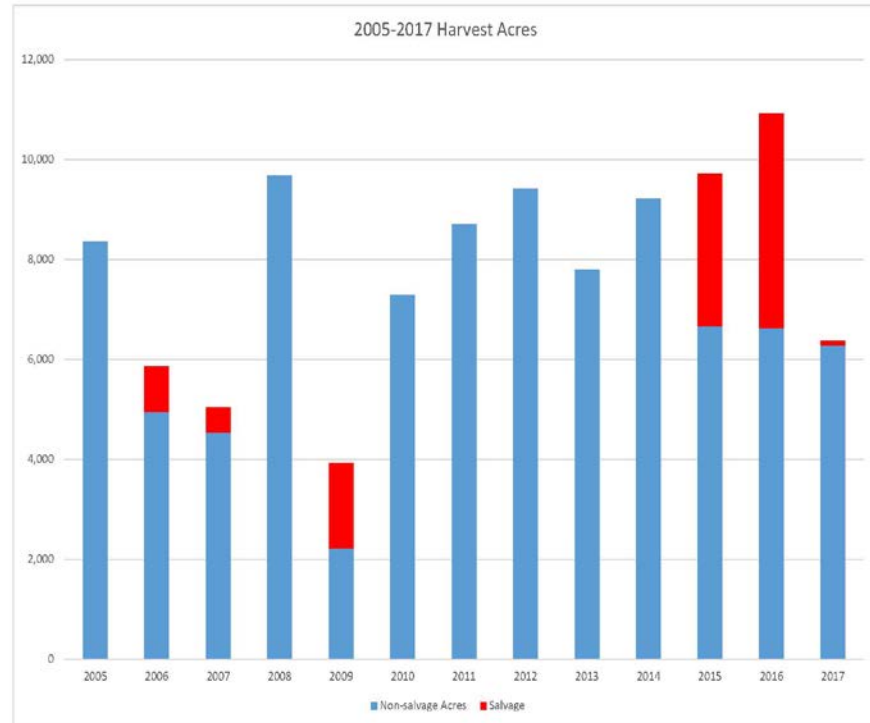
Timber Harvest:

2005-2014

- 586,885 MBF
- 75,283 Acres
- 3,113 Salvage Acres
(4% of Harvested Acres)

2015-2017

- 190,173 MBF (55 MM)
- 26,908 Acres
- 7,437 Salvage Acres
(28% of Harvested Acres)



Reforestation



2005 - 2020 Planting

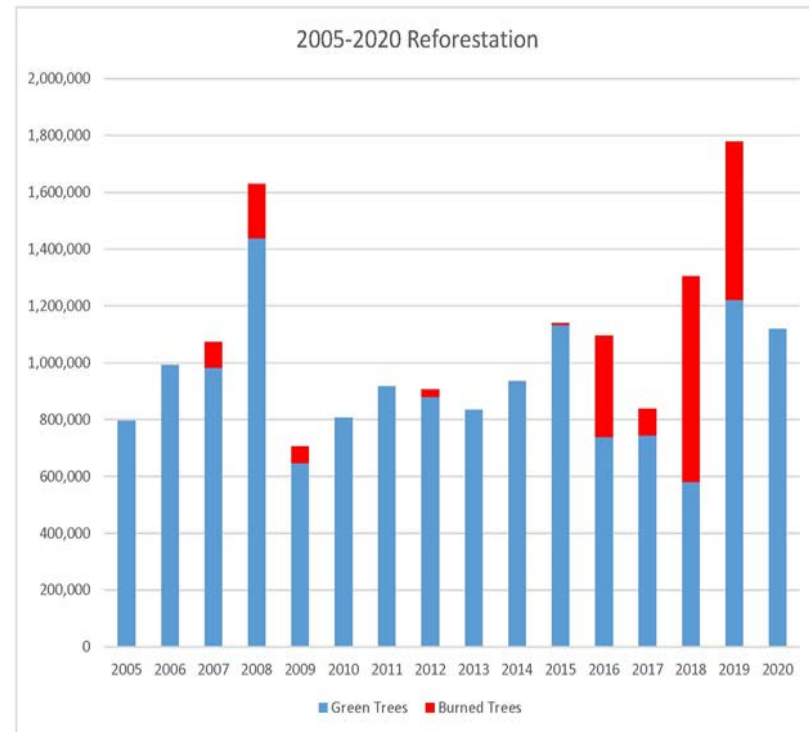
Average Northeast Region
Planting Programs:

2005-2015

- 973,755 Trees/Year
- 3,818 Acres/Year
- 256 Trees/Acre

2016-2020

- 1,226,780 Trees/Year
- 5,582 Acres/Year
- 222 Trees/Acre
- 28 % in Burned Acres



2014, 2015 & 2016 Post Fire Reforestation Priorities

First Priority:

- 7,437 Salvaged Acres (Legal & SFI Obligations)

Second Priority:

- 2,236 Plantation Acres on Sites > SI 70 (Fiduciary Obligation)

Third Priority:

- 5,656 Non-salvaged Acres on Sites > SI 70 (Fiduciary Obligation)

Fourth Priority:

- 2,147 Plantation Acres on Sites < SI 70 (Intergenerational Transfer)

Final Priority:

- Remaining Non-salvaged Acres on Sites < SI 70 (Intergenerational Transfer)



Projected Post Fire Reforestation Costs



7,437 Salvaged Acres:

- 1,636,000 Trees
- \$2,454,000

2,236 Plantation Acres on Sites > SI 70 :

- 492,000 Trees
- \$738,000

5,656 Non-salvaged Acres on Sites > SI 70

- 1,245,000 Trees
- \$1,866,000

2,147 Plantation Acres on Sites < SI 70:

- 472,000 Trees
- \$708,500



2014, 2015, 2016 Post-Fire Reforestation Costs

Projected Post-Fire Reforestation Costs: Up to \$6,000,000

Projected Post-Fire Seedling Needs: Up to 4,000,000 Trees

Current Region Silviculture Budget ('16-'17): \$3,037,000

Projected Region Silviculture Budget ('18-'19): \$2,530,000

Potential Budget Reduction Offsets:

- Forest Health Funding Legislation
- Potential changes in Forest Improvement Treatment Spending Rules
- Are these offsets enough?



