

# The Rapid Evolution of Steep Slope Winch Assist In the Woods of the Northwest

January 19 ,2017

Western Region Council of Forest Engineers

Valley River Inn, Eugene Oregon

Bruce Skurdahl

Summit Attachment & Machinery LLC

---



# Summit Attachments & Machinery







**Tong Thrower**





**Shovel Yarder — OVER/UNDER MOUNT**





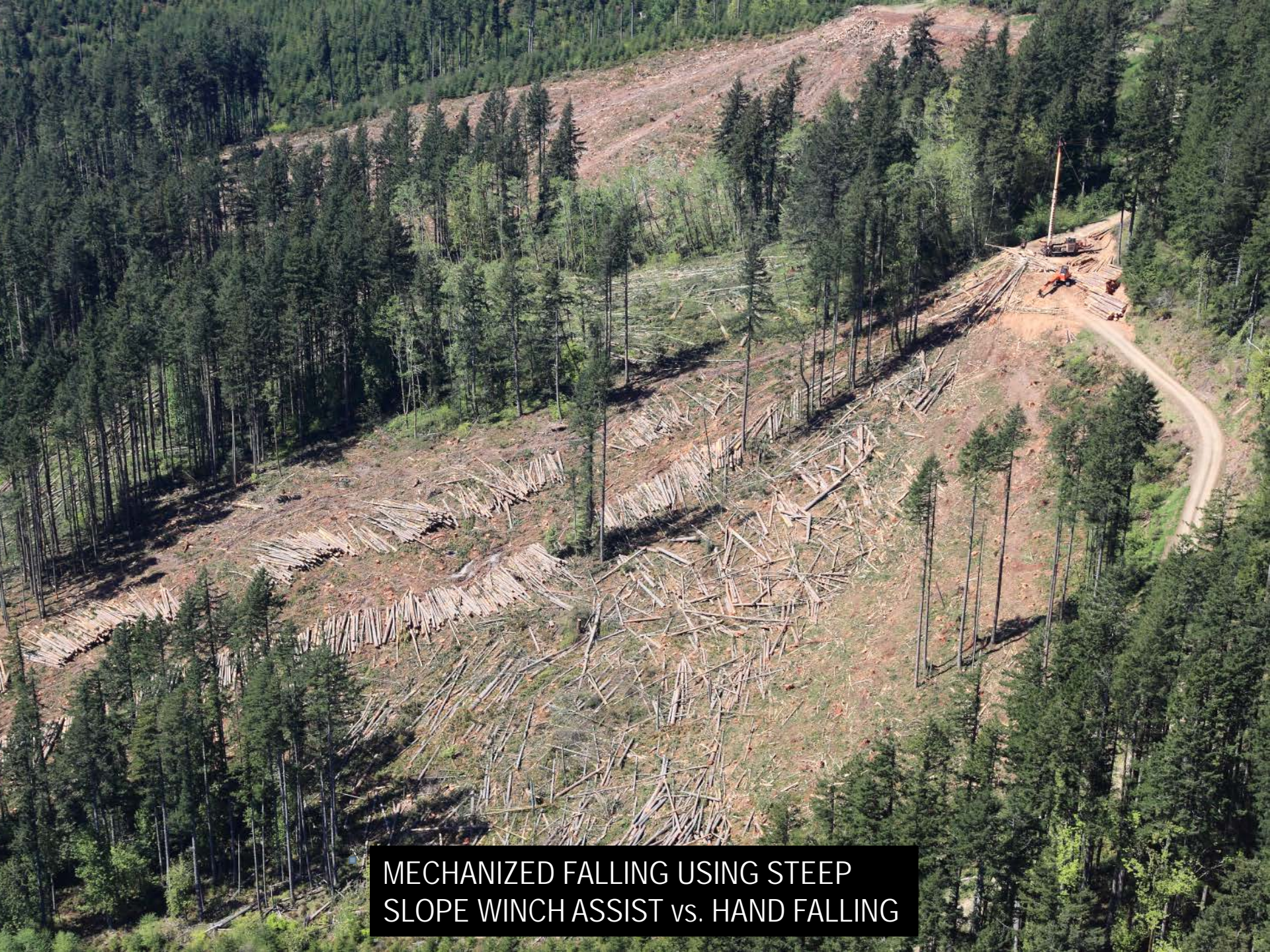
**Shovel Yarder – CORNER MOUNT**





# Winch Assist





MECHANIZED FALLING USING STEEP  
SLOPE WINCH ASSIST vs. HAND FALLING



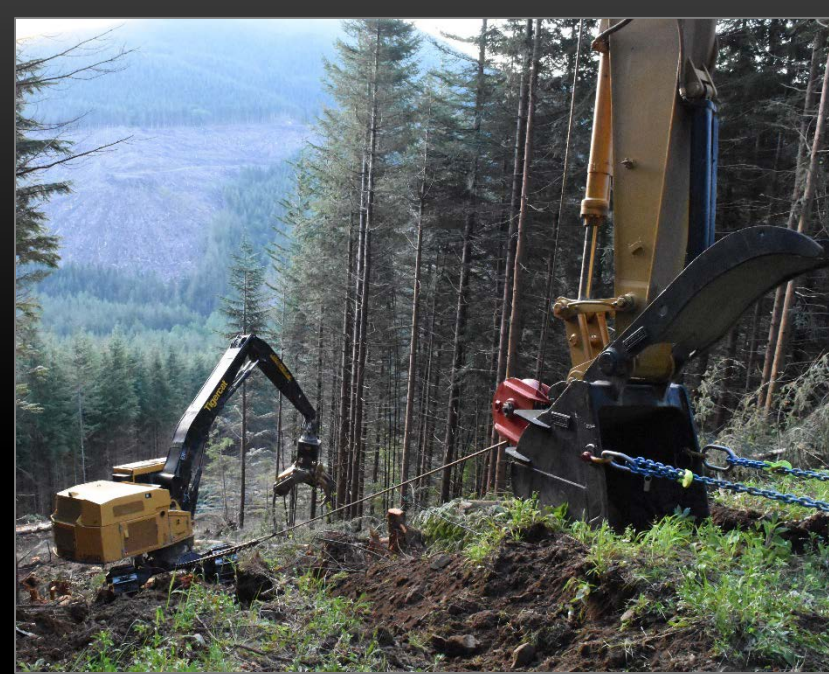


WHY USE WINCH ASSIST? INCREASED SAFETY  
COMPARED TO HAND FALLING











Load Pin

0,000

Brake



Line Count

1692 Ft.

Control Network



TETHER ENABLED

Menu Status



RUN SCREEN

Tension Limit  
38,000

MANUAL DRUM

Drum Machine

Cutting Machine

Estop Triggered



Load Pin

0,000

Brake



Drum Speed %

0

Control Network



TETHER ENABLED

Menu



Tension Limit  
38000

MANUAL DRUM

RUN SCREEN

# System Displays



13.79 Acres (198.4°)



T36N R09E  
sec 35

T36N R09E  
sec 36

HARVEST MAP  
IS DISPLAYED  
ON TABLET IN  
HARVESTER  
CAB

**Tablet with Mapping**

1800000

1800000



USED FELLER BUNCHER  
OFFERS EXCELLENT  
PLATFORM FOR WINCH  
ASSIST















# COMBINATION YARDER







HOT SAW IS FASTER AND MORE EFFICIENT, ESPECIALLY WHEN CUTTING FOR A YARDER







CUT & ARRANGE  
WOOD FOR SHOVELING  
UP OR DOWN THE HILL,  
OR FOR CABLEYARDING











# TETHERED SKIDDER











INCREASE CUTTER SAFETY  
AND REDUCE POTENTIAL  
LIABILITY FOR LOGGER &  
TIMBERLAND OWNER





ONE MAN...TWO MACHINES...  
WINCH ASSIST MACHINE BURNS  
LESS THAN ONE TANK OF FUEL  
PER WEEK





# SAFETY - PRODUCTION - QUALITY

1. Handcutters by far have the most dangerous job in the woods, with choker setters a close second.
2. When timber is cut & stacked it is much safer for the crew.
3. Mechanized falling minimizes breakage, & results in less breakage when yarding.
4. On average we believe a tower side will cover nearly twice as many acres in a year.
5. Engineering has to change to include new techniques. Fewer roads, larger landings for increased production.
6. Protecting resources – less roads & culverts, less rutting & soil disturbance, etc.











# Summit Attachments & Machinery







**New employee in training!**





**Questions....**