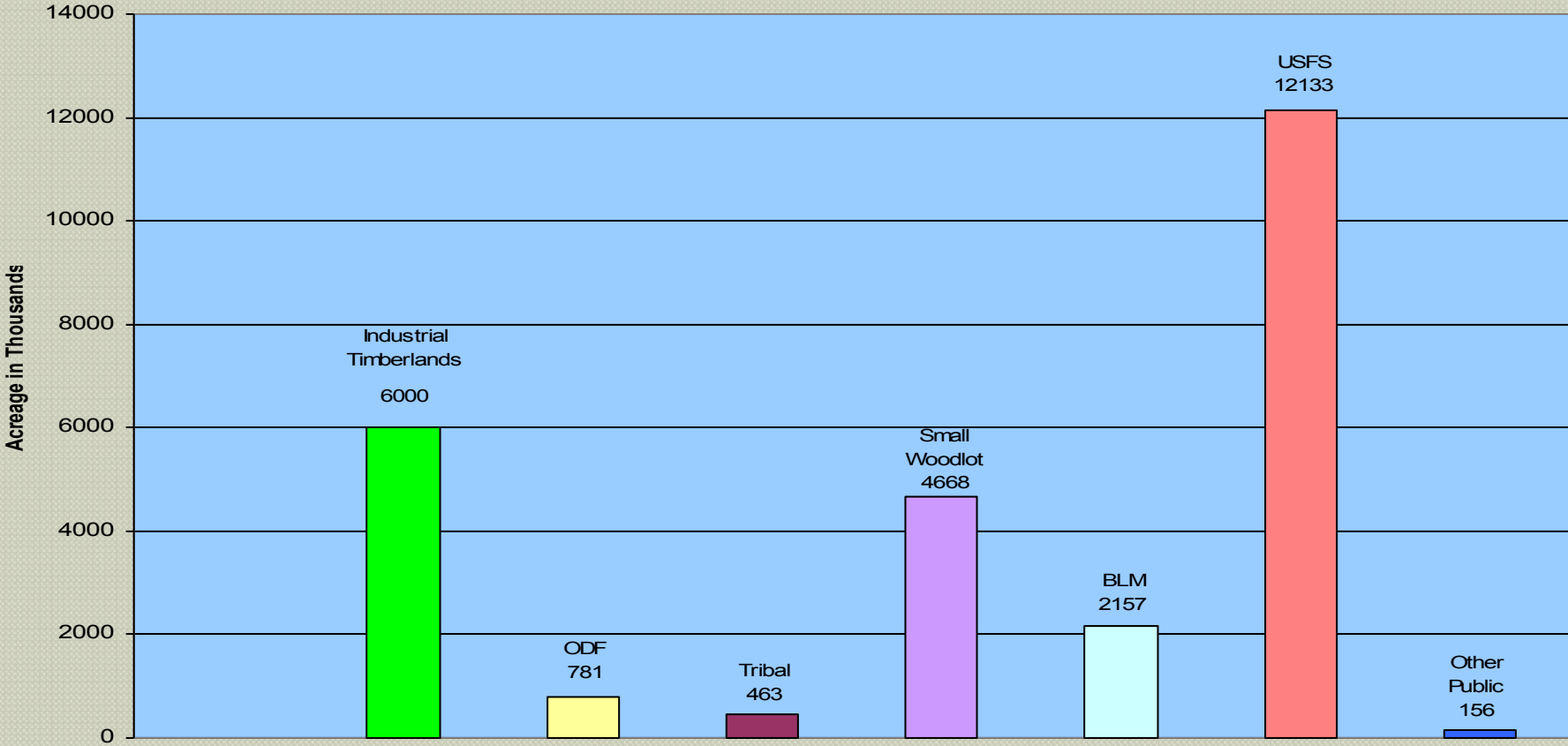


**Western Region Council on
Forest Engineering Seminar
January 14, 2016**

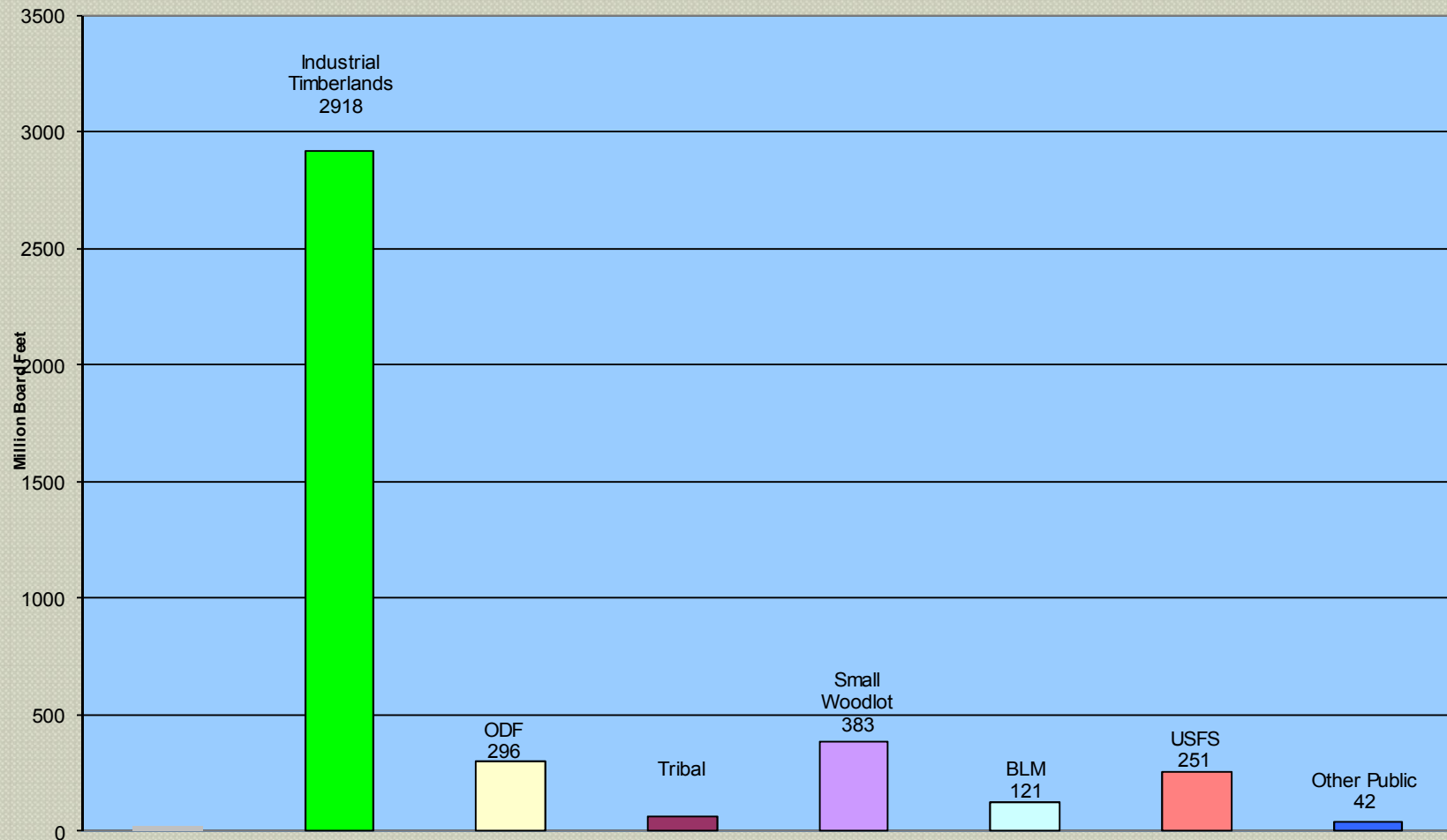
**Federal Forest Management
Affects All Oregonians,
Especially Private Timberland Owners**

*By Bob Ragon, Executive Director
Douglas Timber Operators*

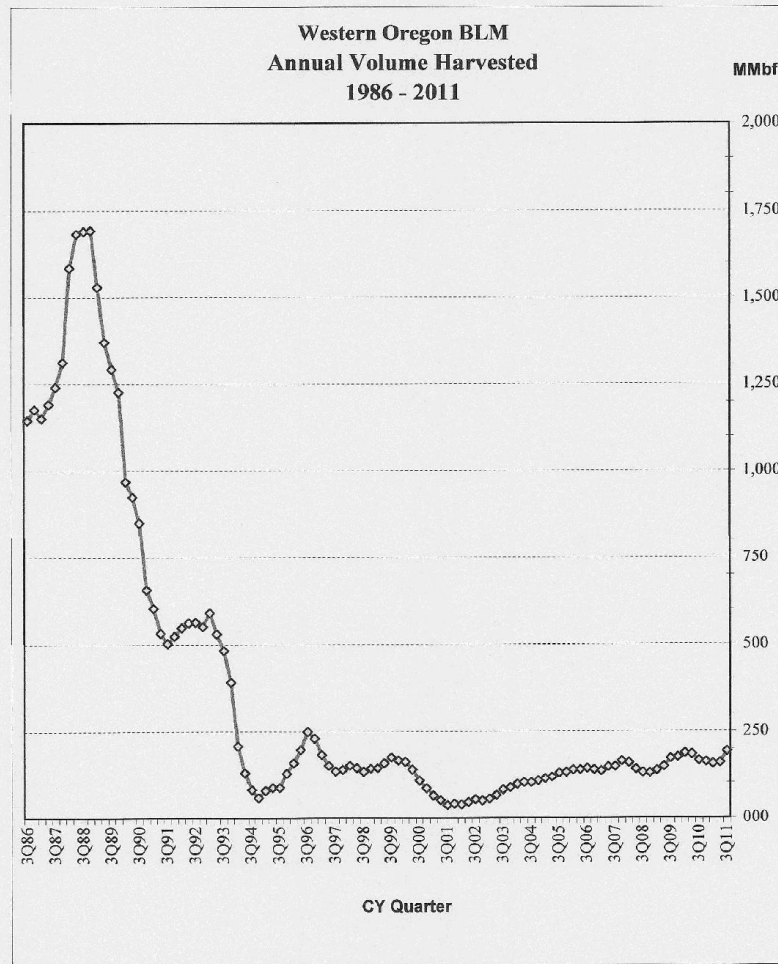
Timberlands Managed by Landowner Group



Oregon Average Timber Harvest 2004 - 2008

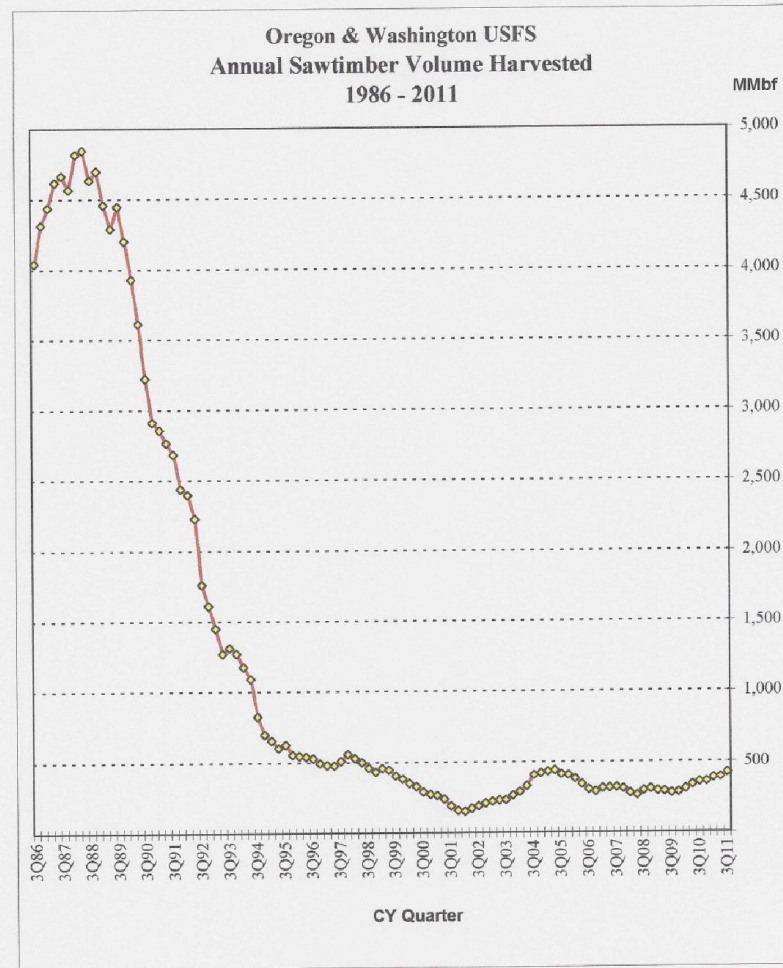


Contract Activity Report



Timber Data Company

Contract Activity Report



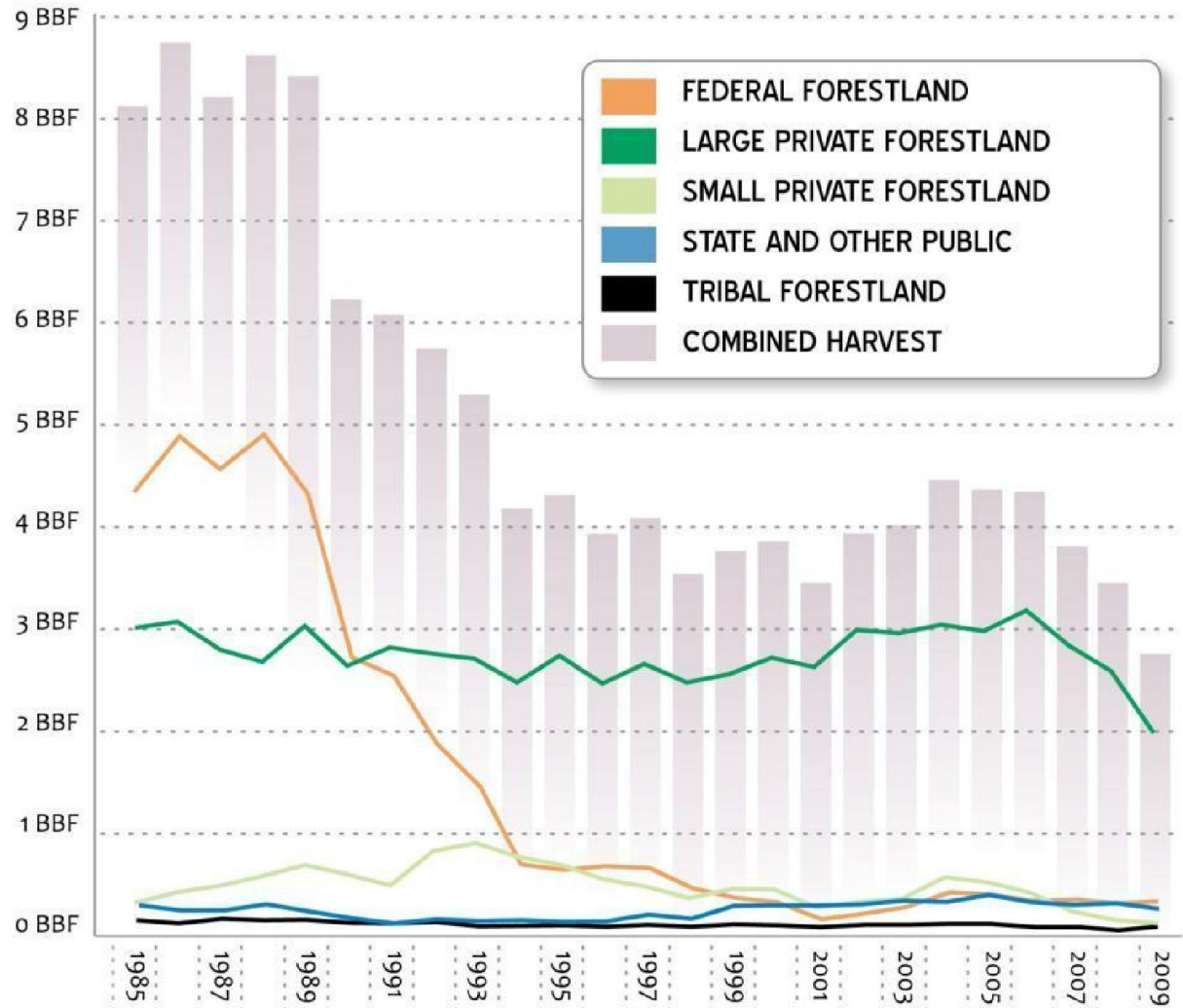
Timber Data Company

DROP IN FEDERAL HARVEST

Since 1990, timber harvest on federal land in Oregon has dropped by more than 90 percent, while harvest from private lands remained at a stable, sustainable level.

The seven to nine billion annual board foot average harvest that had existed since World War II has slid over the past two decades to under four million board feet.

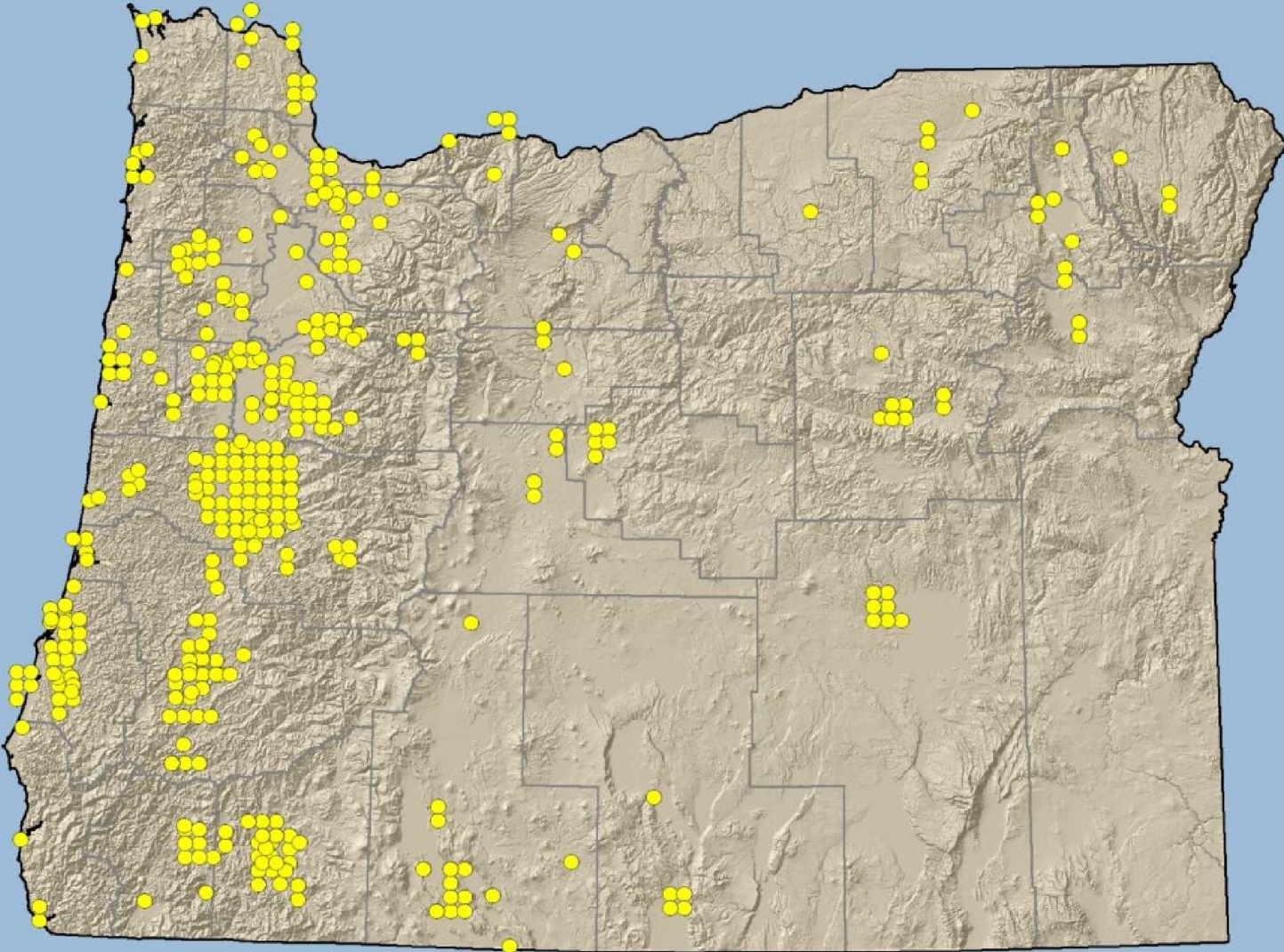
Only about 10 percent of that comes from federal land.



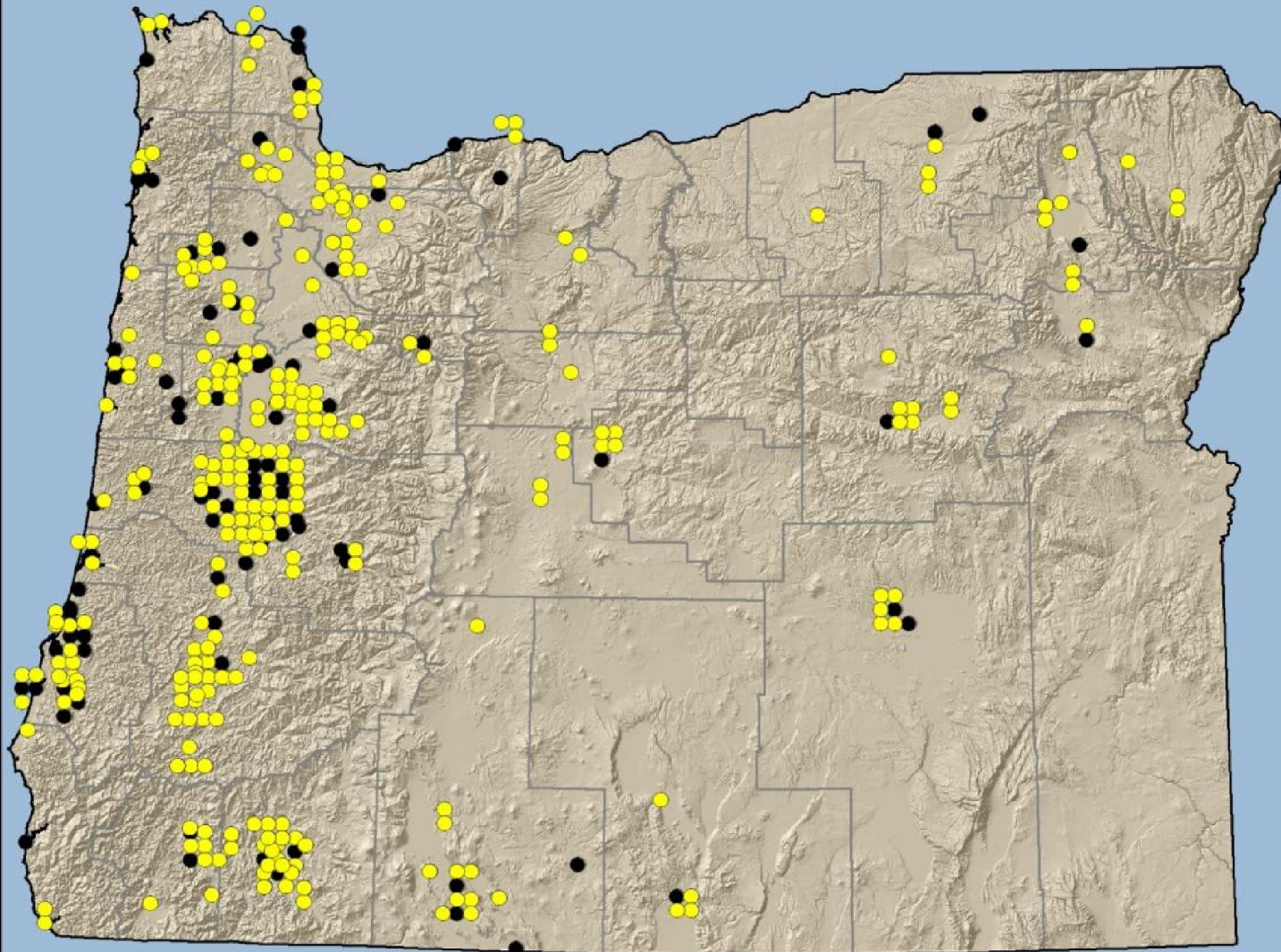
Open Mills 1980

● 405 Open Mills

Total Mill Employment 1980
45,778



Data Source:
Paul F. Ehinger and Associates



Open Mills 1990

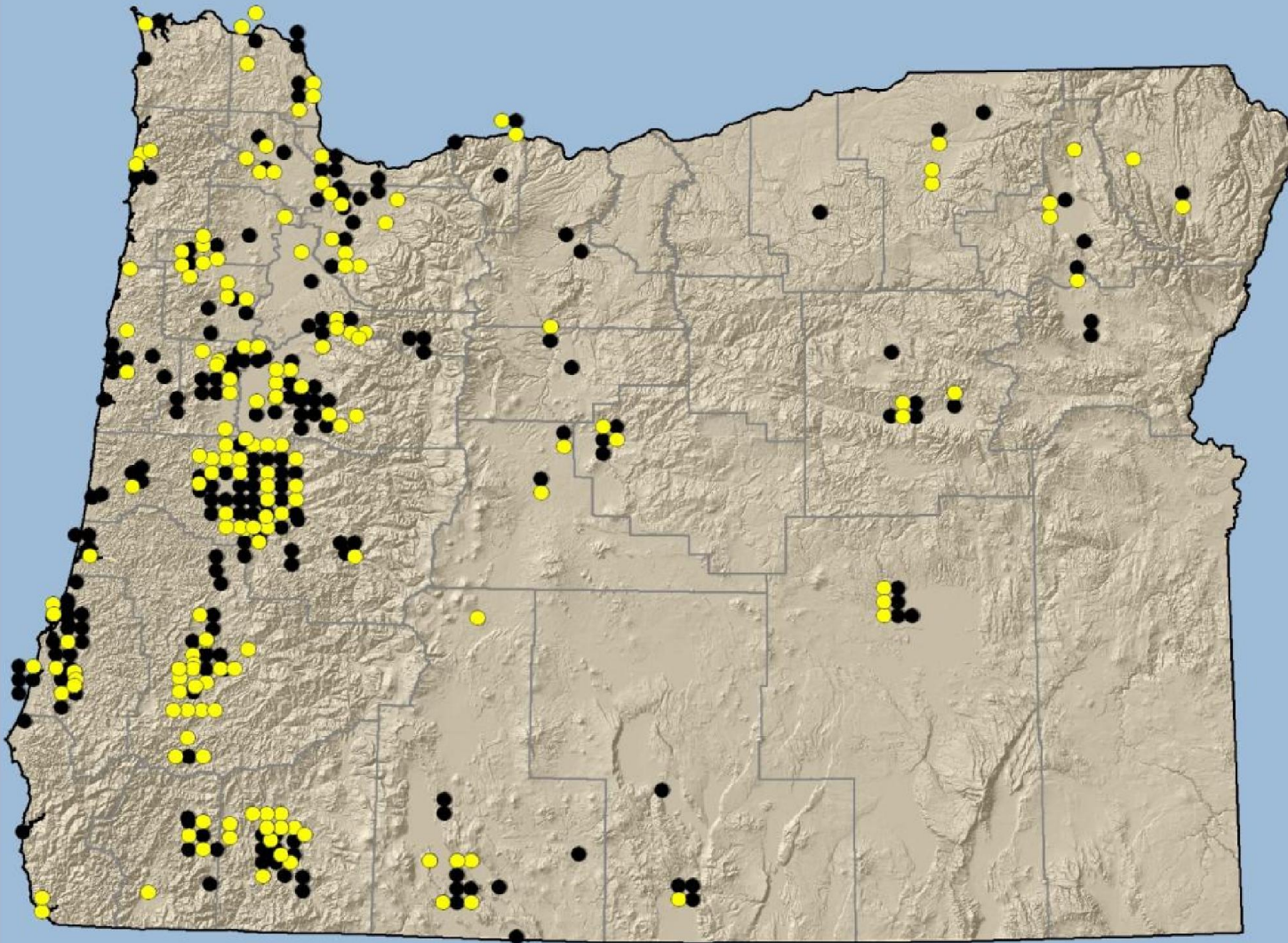
- 313 Open Mills
- 28 Closed in 1990



Data Source:
Paul F. Ehinger and Associates

Open Mills 2000

- 175 Open Mills
- 9 Closed in 2000



Total Mill Employment 1980
45,778

Total Mill Employment 2000
23,715

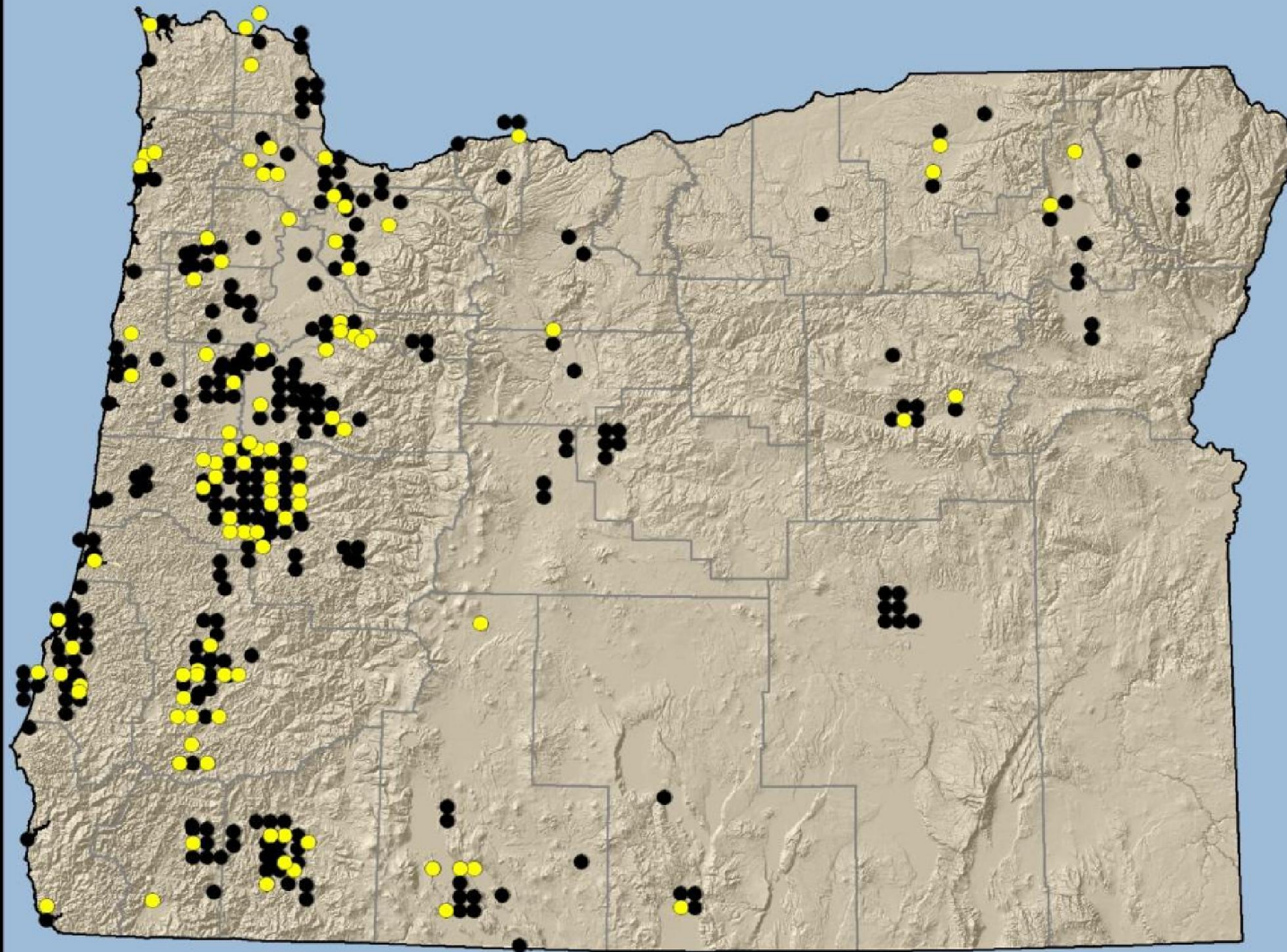
Data Source:
Paul F. Ehinger and Associates

Open Mills 2010

● 106 Open Mills

● Closed Mill

Total mills closed:
1980 - 2009 = 299



Total Mill Employment 1980
45,778

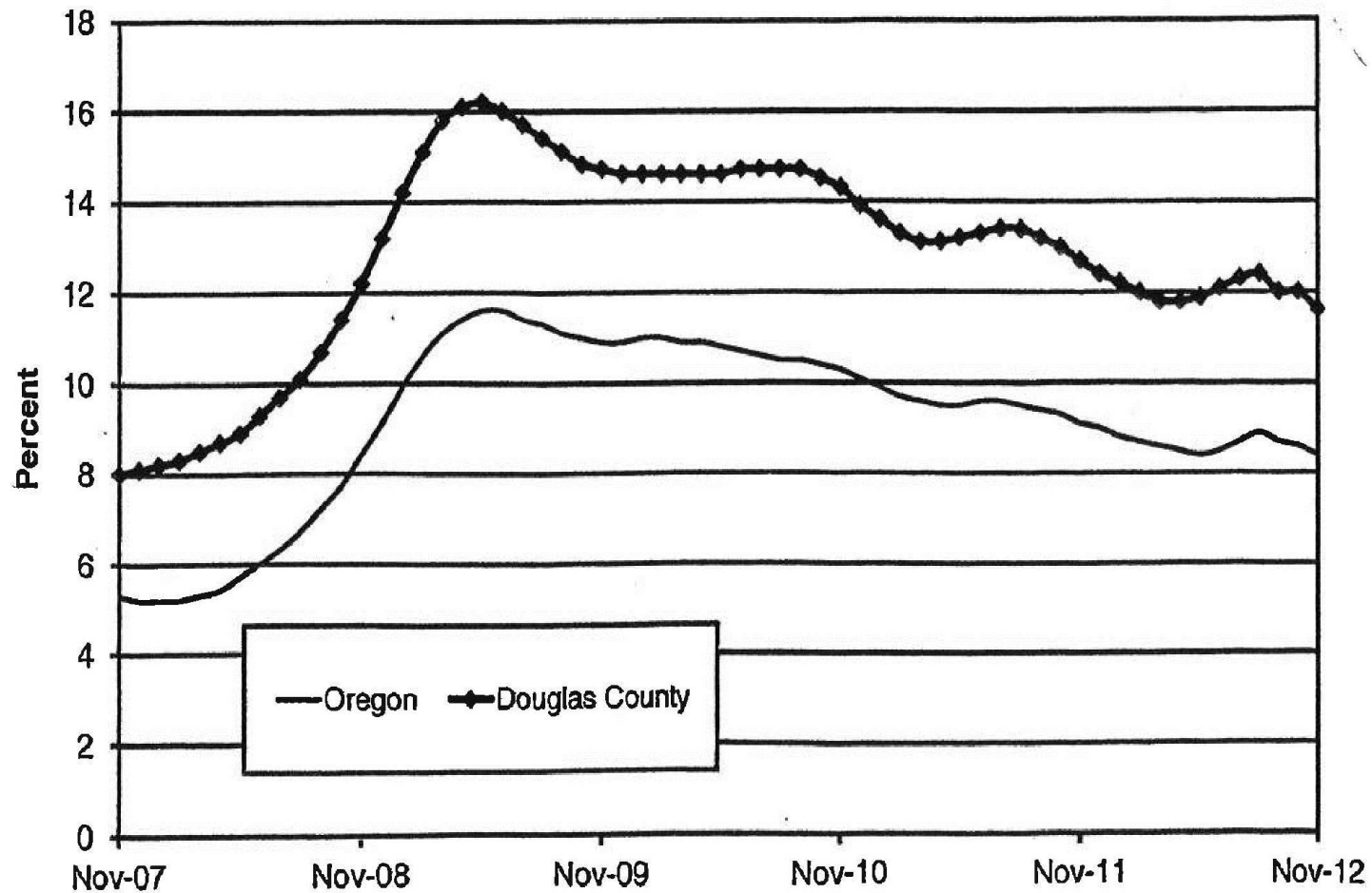
Total Mill Employment 2010
15,708

Data Source:
Paul F. Ehinger and Associates

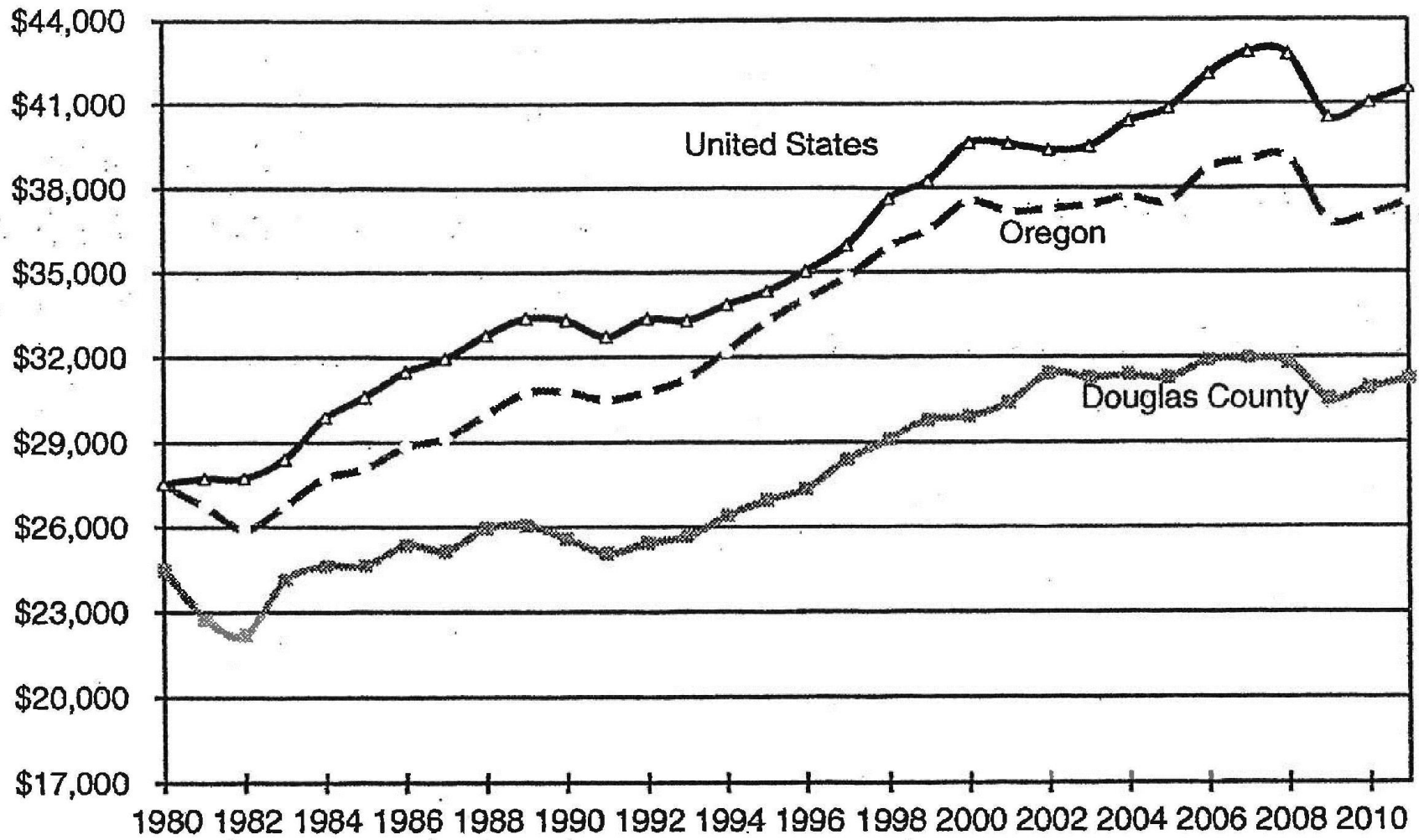
**Douglas County: Employment Change from Previous Year
November 2007 to November 2012**



Seasonally Adjusted Unemployment Rates



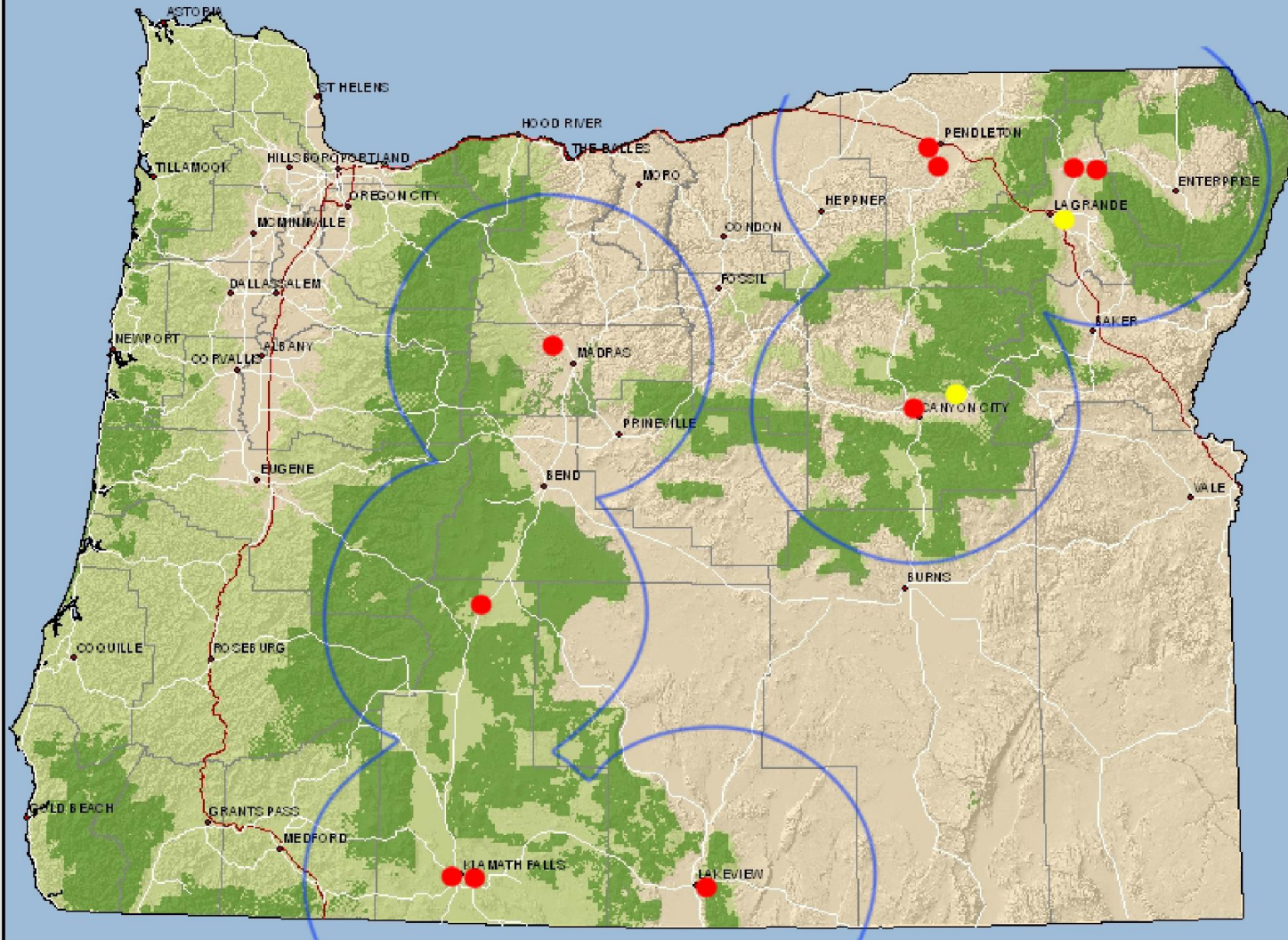
Per Capita Personal Income (Inflation Adjusted, 2011 Dollars)

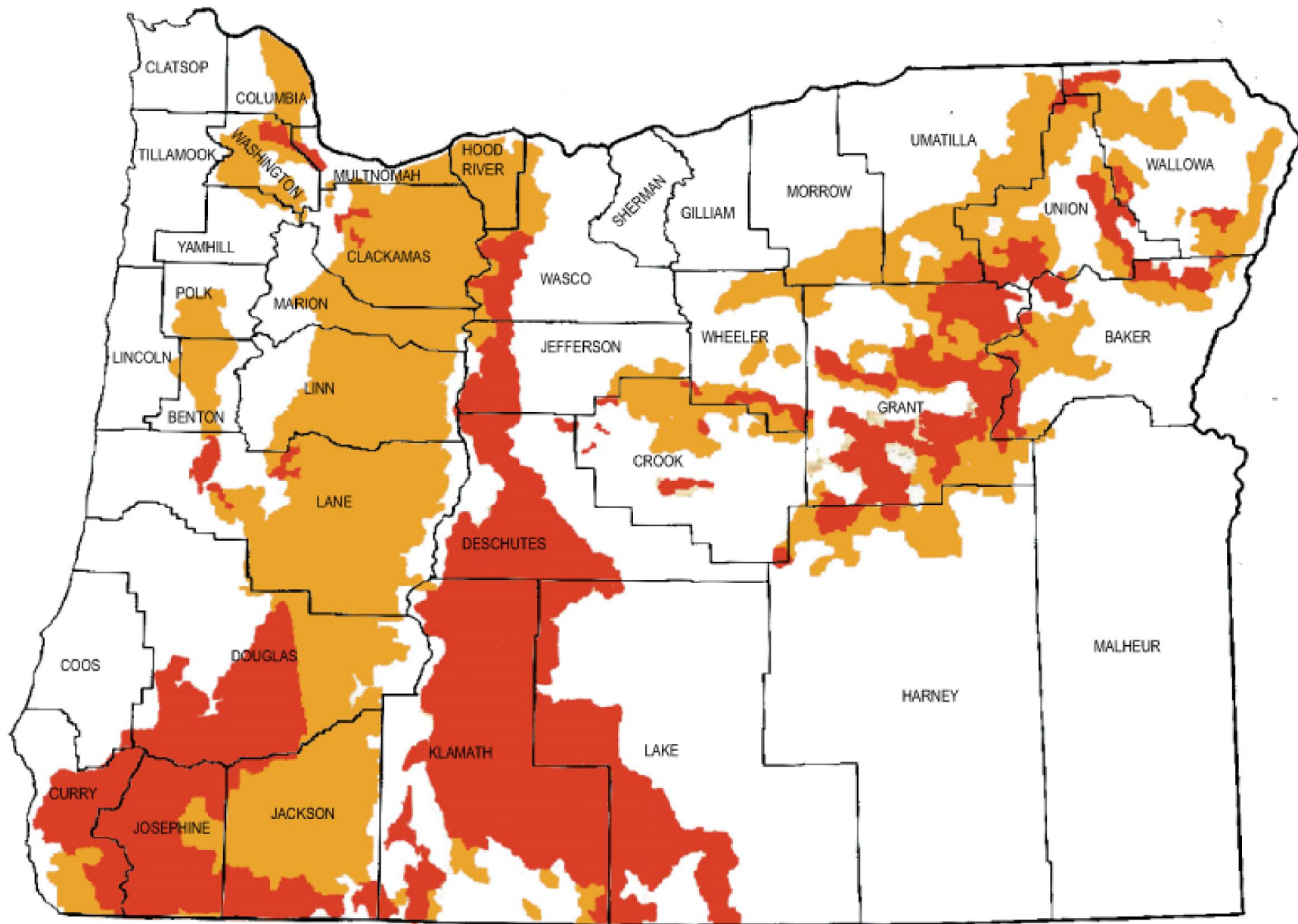




Source: Bureau of Economic Analysis

Oregon Forests

-  USFS Ownership
-  Forested Land
-  Mill Location
-  Potential Location
-  50-mile Radius





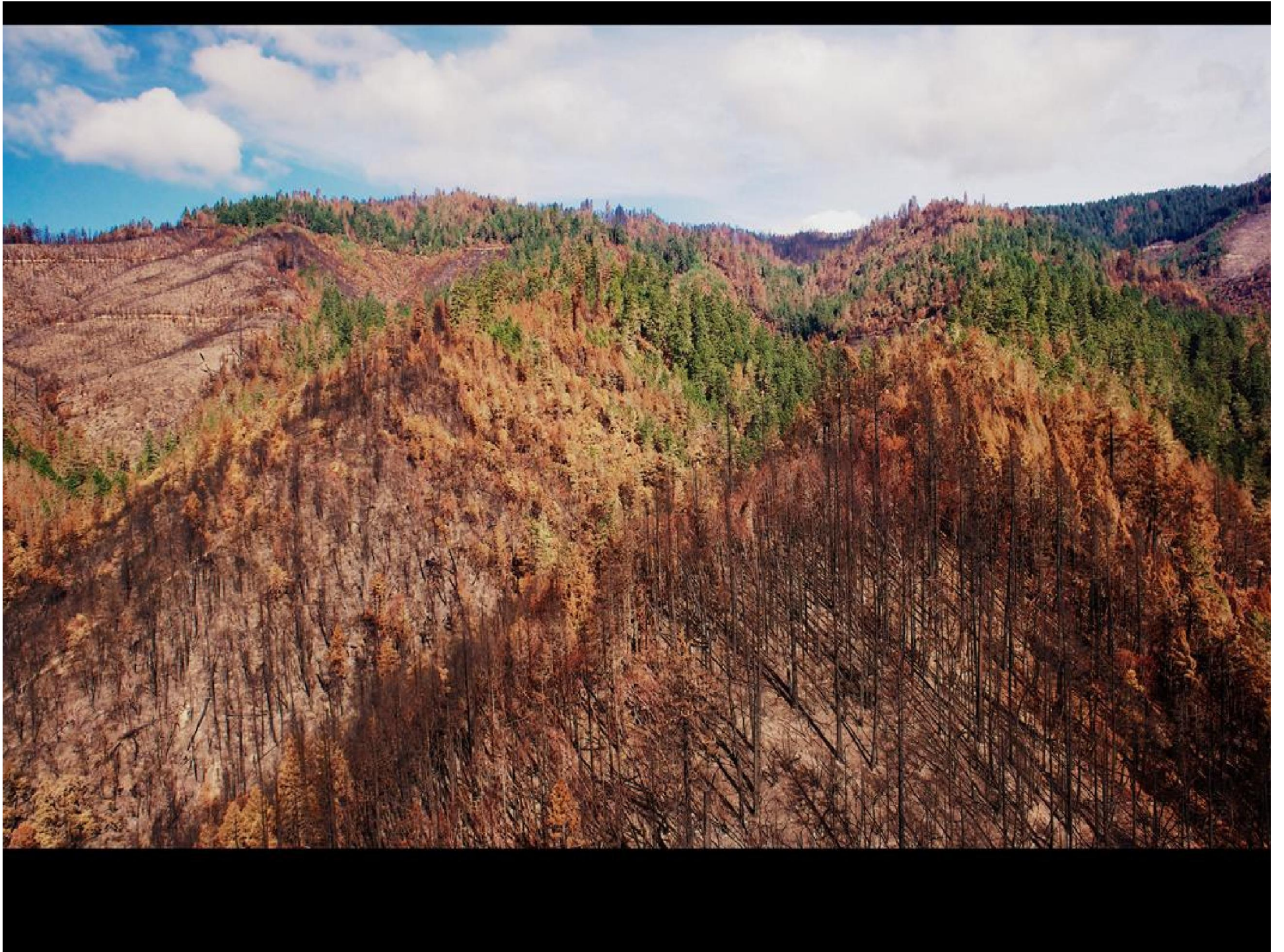
-  FIRE CONDITION CLASS 2 (missing 1 historic fire return interval)
-  FIRE CONDITION CLASS 3 (missing 2 or more intervals)































~The End~