

Wayne Stone Logging Boulder Sale

Jason Colter
OSU College of Forestry



Background

- Senior pursuing a BS in Forest Management at Oregon State.
- Working for OSU Student Logging Crew.
- Toured Wayne Stone logging operation to learn more about the versatility and engineering of cable systems.

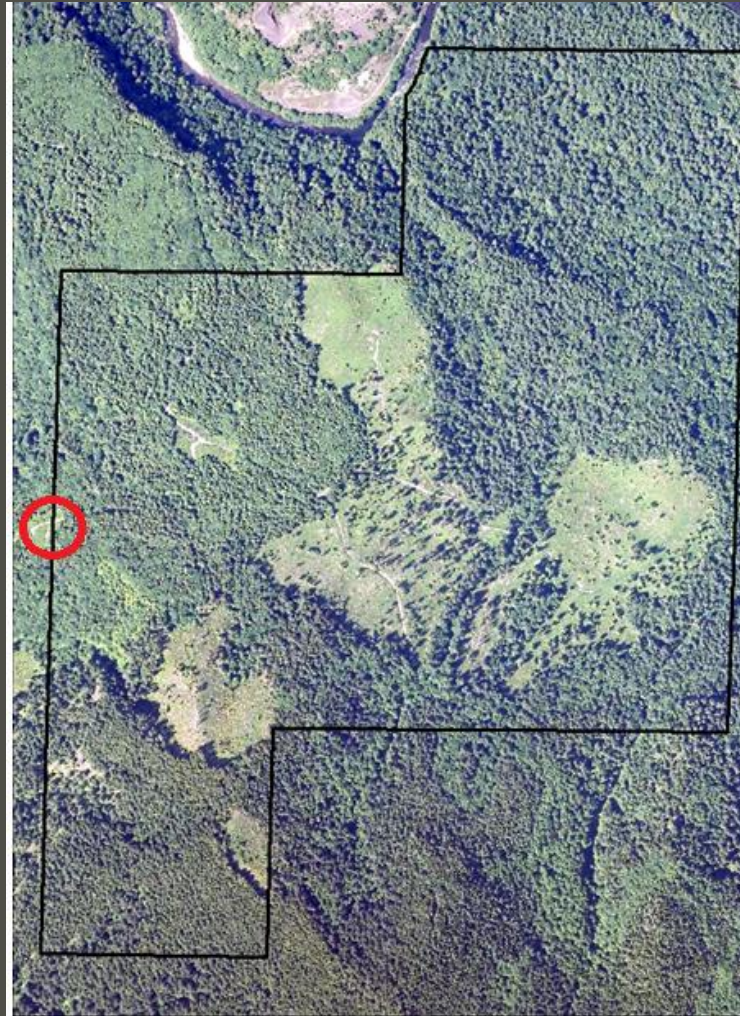


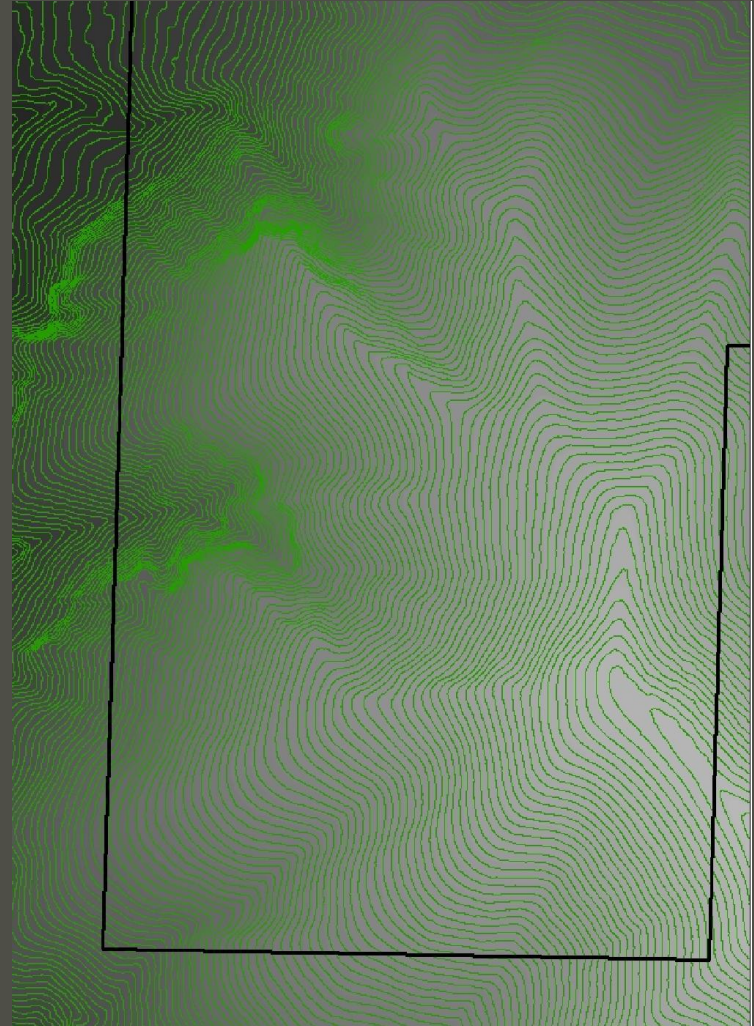
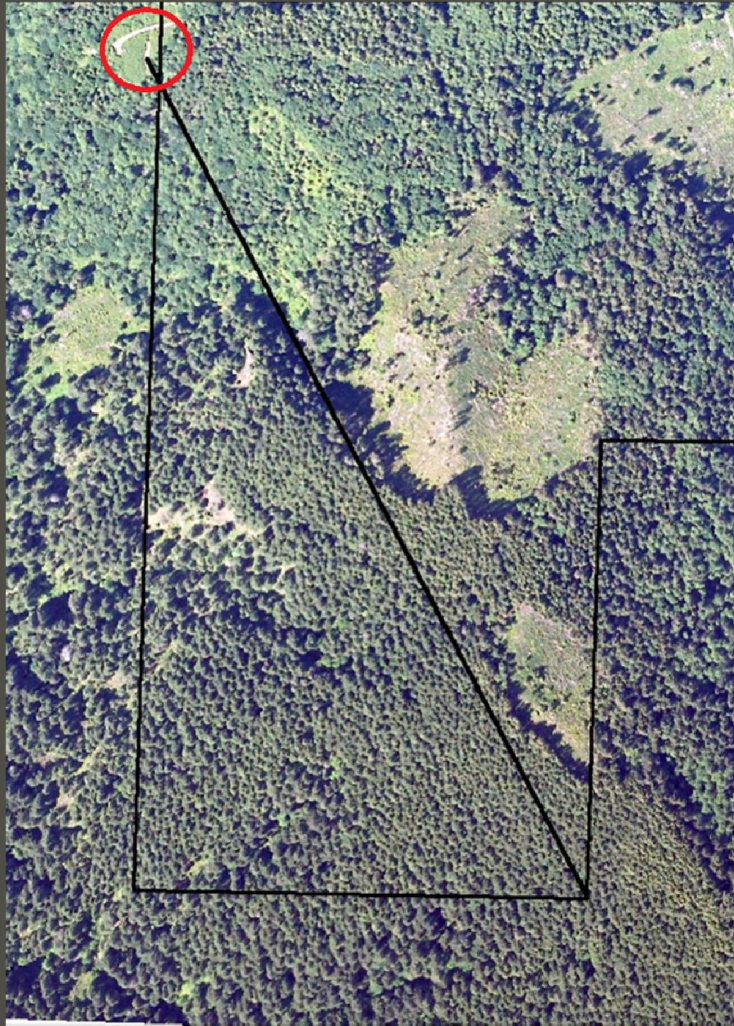
Unit Description and Background

- The unit was originally purchased by Columbia Vista to be helicopter logged, but there was not sufficient volume.
- No suitable road access, restraints from NEPA made new road construction impractical.
- Only option for a landing location was at the base of a 500 foot cliff.









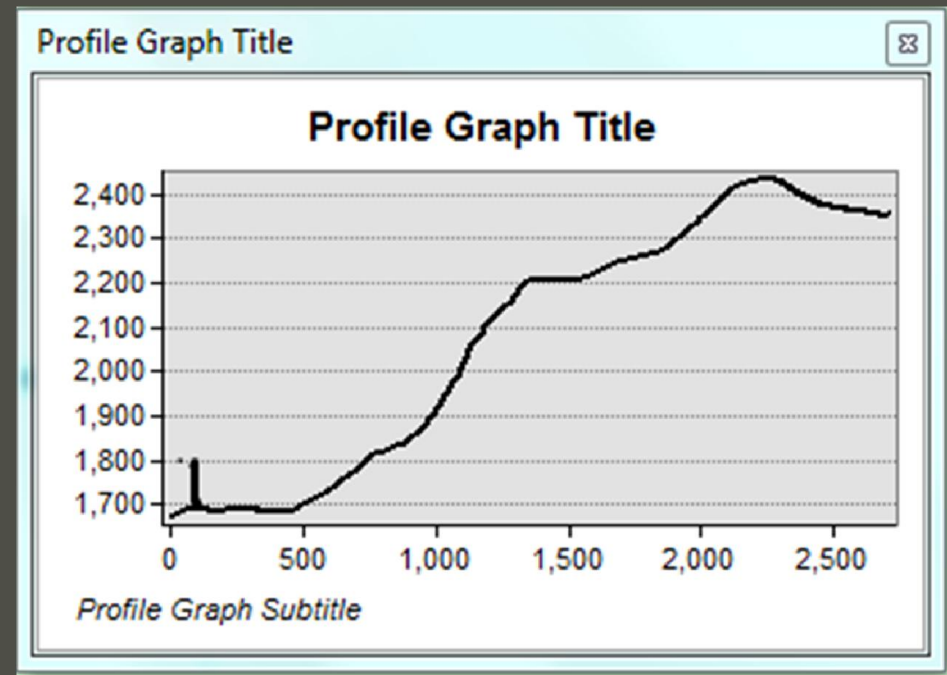
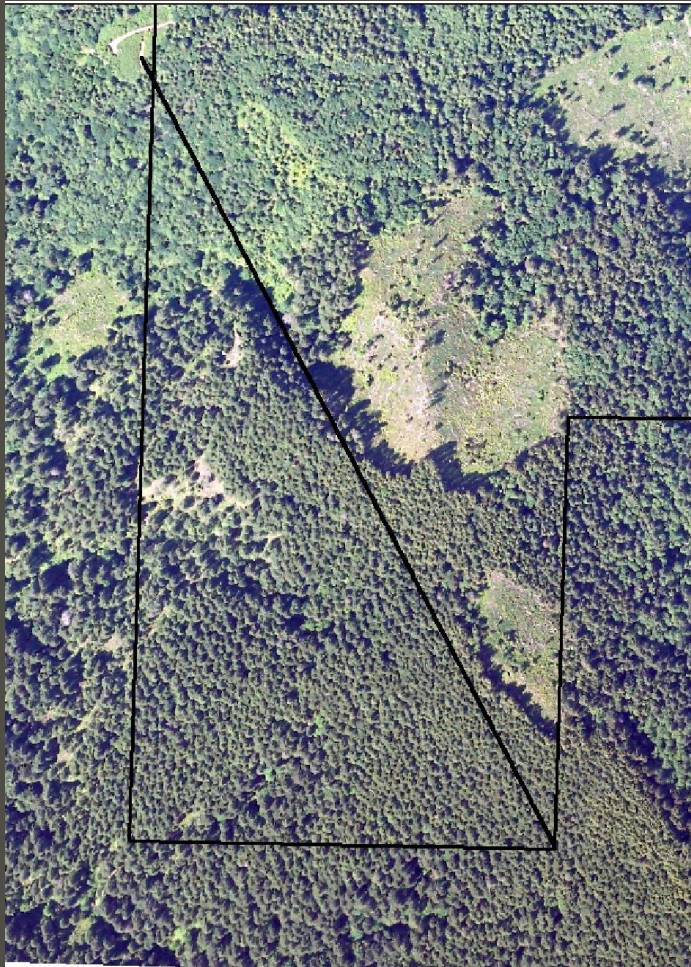
Equipment

- Skagit BU99, 110' tower
- 7900 Bowman SkyCar on 1 3/8th skyline
- Custom built jacks to be used on as many as 3 intermediate support trees.











- Haulback line also had to be suspended to avoid excessive wear.
- A single 80 ft support tree provided adequate lift.
- 2 corner blocks used to direct haulback.













Questions?

